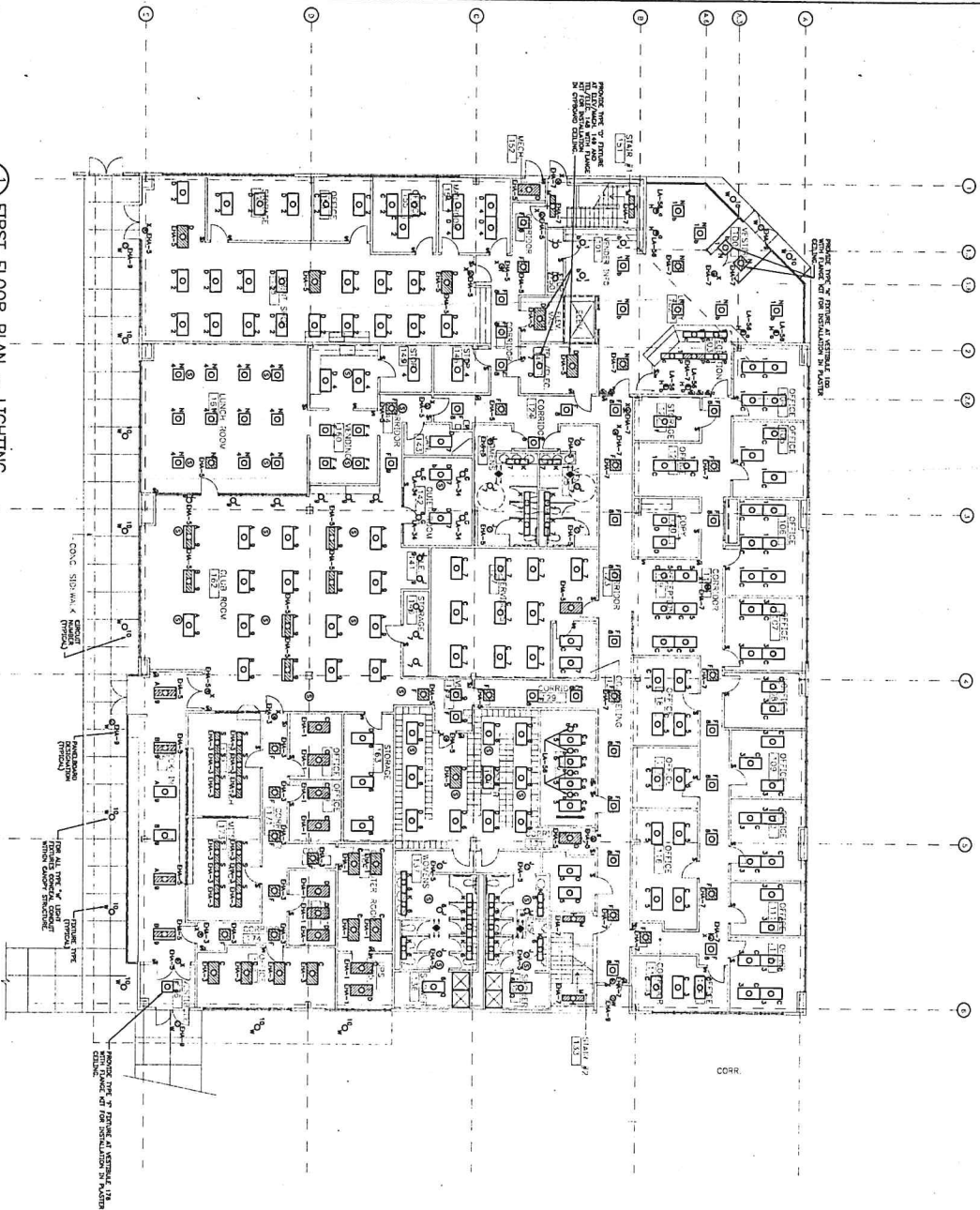


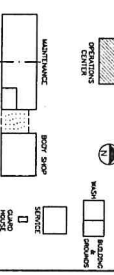
**FIRST FLOOR PLAN - LIGHTING**  
SCALE: 1/8"=1'-0"



**GENERAL NOTES**

1. REFER TO ARCHITECTURAL SPECIFICATIONS FOR LIGHT FIXTURE SCHEDULE.
2. ALL LIGHT FIXTURES ON THIS DRAWING SHALL BE CONTROLLED BY THE BUILDING MANAGEMENT SYSTEM.
3. REFER TO ARCHITECTURAL SPECIFICATIONS FOR LIGHTING CONTROL SYSTEM SCHEDULE.
4. REFER TO ARCHITECTURAL SPECIFICATIONS FOR LIGHTING CONTROL SYSTEM SCHEDULE.
5. REFER TO ARCHITECTURAL SPECIFICATIONS FOR LIGHTING CONTROL SYSTEM SCHEDULE.

**KEY PLAN**



NO.	DESCRIPTION	DATE
1	SCALE 1/8"=1'-0"	2/27/05
2	REVISIONS	

**HUNT-ZOLLARS**  
ENGINEERS / ARCHITECTS

2000 W. BROADWAY  
SUITE 100  
DENVER, CO 80202  
TEL: 303.733.1111  
WWW.HUNT-ZOLLARS.COM

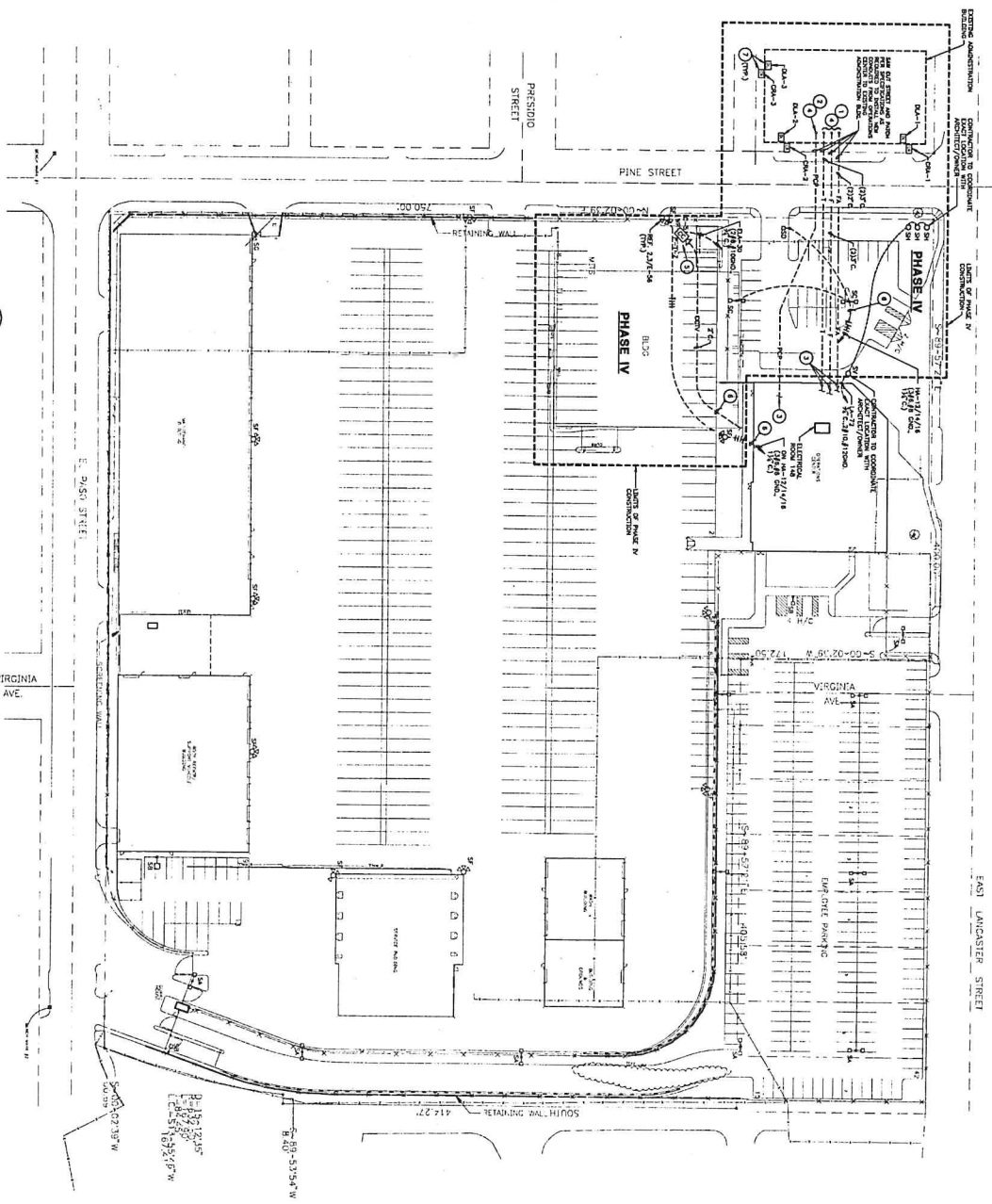
**OPERATIONS CENTER**  
FIRST FLOOR PLAN - LIGHTING

DATE	2/27/05
DESIGNED BY	JG
CHECKED BY	JG
PROJECT NUMBER	03-013301
SHEET	E-44
OF	59E

DATE	2/27/05
DESIGNED BY	JG
CHECKED BY	JG
PROJECT NUMBER	03-013301
SHEET	E-44
OF	59E

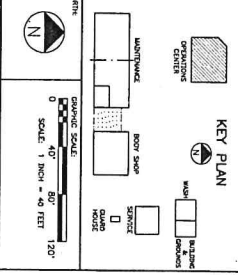
SCALE	DATE	BY	CHKD BY
1"=40'-0"	10/27/15	JH	JH

**1 PHASE IV - SITE PLAN**  
SCALE: 1"=40'-0"



- GENERAL NOTES**
1. REFER TO SHEET 1 FOR PRELIMINARY AND AMENDMENTS.
  2. ALL CONSTRUCTION SHALL BE IN ACCORDANCE WITH THE LATEST EDITIONS OF THE INTERNATIONAL BUILDING CODE (IBC) AND THE NATIONAL ELECTRICAL CODE (NEC).
  3. ALL CONSTRUCTION SHALL BE IN ACCORDANCE WITH THE LATEST EDITIONS OF THE INTERNATIONAL MECHANICAL AND PLUMBING CODE (IMC) AND THE NATIONAL FIRE PROTECTION ASSOCIATION (NFPA) CODES.
  4. ALL CONSTRUCTION SHALL BE IN ACCORDANCE WITH THE LATEST EDITIONS OF THE INTERNATIONAL ROADS AND BUILT INFRASTRUCTURE CODE (IRBIC) AND THE NATIONAL FIRE PROTECTION ASSOCIATION (NFPA) CODES.
  5. ALL CONSTRUCTION SHALL BE IN ACCORDANCE WITH THE LATEST EDITIONS OF THE INTERNATIONAL PLUMBING AND MECHANICAL CODE (IPMC) AND THE NATIONAL FIRE PROTECTION ASSOCIATION (NFPA) CODES.
  6. ALL CONSTRUCTION SHALL BE IN ACCORDANCE WITH THE LATEST EDITIONS OF THE INTERNATIONAL MECHANICAL AND PLUMBING CODE (IMC) AND THE NATIONAL FIRE PROTECTION ASSOCIATION (NFPA) CODES.
  7. ALL CONSTRUCTION SHALL BE IN ACCORDANCE WITH THE LATEST EDITIONS OF THE INTERNATIONAL MECHANICAL AND PLUMBING CODE (IMC) AND THE NATIONAL FIRE PROTECTION ASSOCIATION (NFPA) CODES.
  8. ALL CONSTRUCTION SHALL BE IN ACCORDANCE WITH THE LATEST EDITIONS OF THE INTERNATIONAL MECHANICAL AND PLUMBING CODE (IMC) AND THE NATIONAL FIRE PROTECTION ASSOCIATION (NFPA) CODES.

- NOTE BY SYMBOL**
1. EXISTING CONDITIONS
  2. PROPOSED CONSTRUCTION
  3. CONSTRUCTION TO BE COMPLETED BY DATE
  4. CONSTRUCTION TO BE COMPLETED BY DATE
  5. CONSTRUCTION TO BE COMPLETED BY DATE
  6. CONSTRUCTION TO BE COMPLETED BY DATE
  7. CONSTRUCTION TO BE COMPLETED BY DATE
  8. CONSTRUCTION TO BE COMPLETED BY DATE

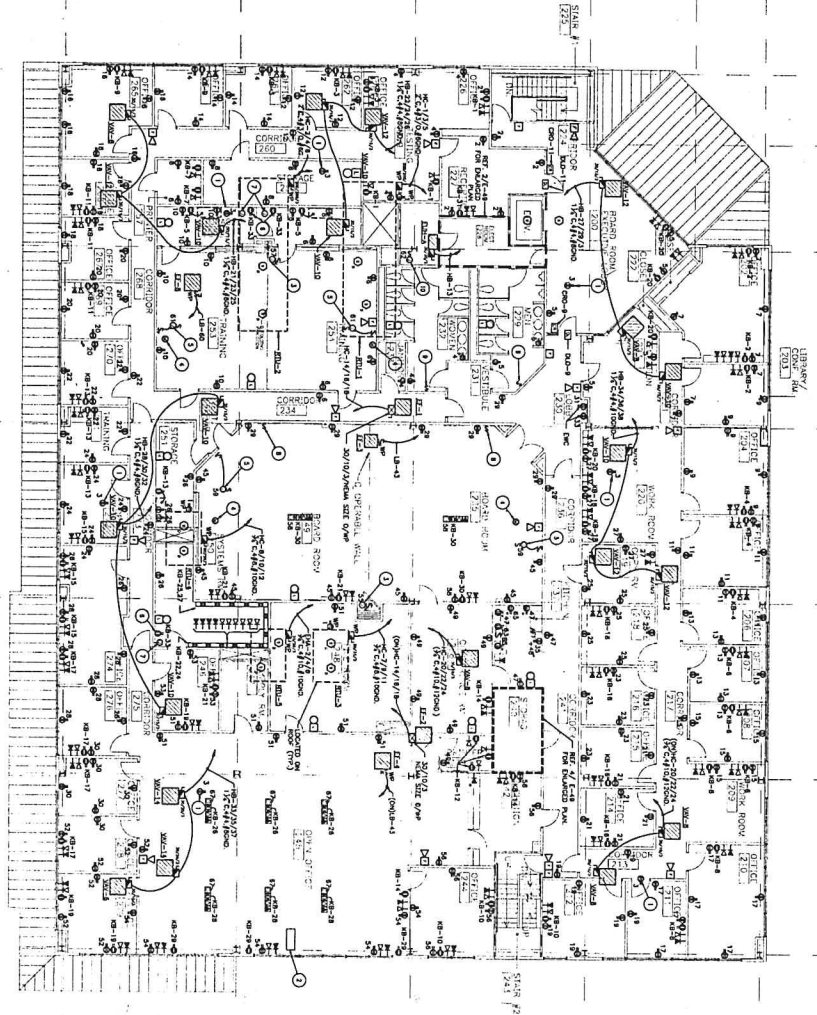


NO.	DESCRIPTION	DATE
1	ISSUE FOR BIDDING	3/27/15
2	REVISIONS	

**HUIT - ZOLLARS**  
ENGINEERS / ARCHITECTS  
1000 W. 10TH STREET, SUITE 100  
DENVER, CO 80202  
TEL: 303.733.1111  
WWW.HUITZOLLARS.COM

**CHI CAMPUS ENGINEERING, INC.**  
1000 W. 10TH STREET, SUITE 100  
DENVER, CO 80202  
TEL: 303.733.1111  
WWW.CHICAMPUSENGINEERING.COM

**100 TRANSPORTATION CENTER**  
1000 W. 10TH STREET, SUITE 100  
DENVER, CO 80202  
TEL: 303.733.1111  
WWW.100TRANSPORTATIONCENTER.COM



1 SECOND FLOOR PLAN - POWER  
SCALE: 1/8" = 1'-0"

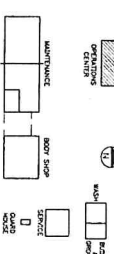
**GENERAL NOTES**

1. REFER TO SHEET 1 FOR SYMBOLS AND ABBREVIATIONS.
2. ALL ELECTRICAL WORK SHALL BE INSTALLED IN ACCORDANCE WITH THE NATIONAL ELECTRICAL CODE (NEC) AND ALL APPLICABLE LOCAL CODES.
3. ALL ELECTRICAL WORK SHALL BE INSTALLED IN ACCORDANCE WITH THE NATIONAL ELECTRICAL CODE (NEC) AND ALL APPLICABLE LOCAL CODES.
4. ALL ELECTRICAL WORK SHALL BE INSTALLED IN ACCORDANCE WITH THE NATIONAL ELECTRICAL CODE (NEC) AND ALL APPLICABLE LOCAL CODES.
5. ALL ELECTRICAL WORK SHALL BE INSTALLED IN ACCORDANCE WITH THE NATIONAL ELECTRICAL CODE (NEC) AND ALL APPLICABLE LOCAL CODES.
6. ALL ELECTRICAL WORK SHALL BE INSTALLED IN ACCORDANCE WITH THE NATIONAL ELECTRICAL CODE (NEC) AND ALL APPLICABLE LOCAL CODES.
7. ALL ELECTRICAL WORK SHALL BE INSTALLED IN ACCORDANCE WITH THE NATIONAL ELECTRICAL CODE (NEC) AND ALL APPLICABLE LOCAL CODES.
8. ALL ELECTRICAL WORK SHALL BE INSTALLED IN ACCORDANCE WITH THE NATIONAL ELECTRICAL CODE (NEC) AND ALL APPLICABLE LOCAL CODES.
9. ALL ELECTRICAL WORK SHALL BE INSTALLED IN ACCORDANCE WITH THE NATIONAL ELECTRICAL CODE (NEC) AND ALL APPLICABLE LOCAL CODES.
10. ALL ELECTRICAL WORK SHALL BE INSTALLED IN ACCORDANCE WITH THE NATIONAL ELECTRICAL CODE (NEC) AND ALL APPLICABLE LOCAL CODES.

**NOTES BY SYMBOL**

1. REFER TO SHEET 1 FOR SYMBOLS AND ABBREVIATIONS.
2. ALL ELECTRICAL WORK SHALL BE INSTALLED IN ACCORDANCE WITH THE NATIONAL ELECTRICAL CODE (NEC) AND ALL APPLICABLE LOCAL CODES.
3. ALL ELECTRICAL WORK SHALL BE INSTALLED IN ACCORDANCE WITH THE NATIONAL ELECTRICAL CODE (NEC) AND ALL APPLICABLE LOCAL CODES.
4. ALL ELECTRICAL WORK SHALL BE INSTALLED IN ACCORDANCE WITH THE NATIONAL ELECTRICAL CODE (NEC) AND ALL APPLICABLE LOCAL CODES.
5. ALL ELECTRICAL WORK SHALL BE INSTALLED IN ACCORDANCE WITH THE NATIONAL ELECTRICAL CODE (NEC) AND ALL APPLICABLE LOCAL CODES.
6. ALL ELECTRICAL WORK SHALL BE INSTALLED IN ACCORDANCE WITH THE NATIONAL ELECTRICAL CODE (NEC) AND ALL APPLICABLE LOCAL CODES.
7. ALL ELECTRICAL WORK SHALL BE INSTALLED IN ACCORDANCE WITH THE NATIONAL ELECTRICAL CODE (NEC) AND ALL APPLICABLE LOCAL CODES.
8. ALL ELECTRICAL WORK SHALL BE INSTALLED IN ACCORDANCE WITH THE NATIONAL ELECTRICAL CODE (NEC) AND ALL APPLICABLE LOCAL CODES.
9. ALL ELECTRICAL WORK SHALL BE INSTALLED IN ACCORDANCE WITH THE NATIONAL ELECTRICAL CODE (NEC) AND ALL APPLICABLE LOCAL CODES.
10. ALL ELECTRICAL WORK SHALL BE INSTALLED IN ACCORDANCE WITH THE NATIONAL ELECTRICAL CODE (NEC) AND ALL APPLICABLE LOCAL CODES.

**KEY PLAN**



NO.	REVISION/DATE	DATE
1	SCALE FROM EDS	2/27/25
2	NO. REVISION/DATE	

**HUITT - ZOLLARS**  
ENGINEERS / ARCHITECTS

4704  
A NEW OPERATIONS CENTER AND  
TRANSFORMATION CENTER  
FOR THE NORTH TRANSPORTATION AUTHORITY  
4704 NORTH TRANSPORTATION AUTHORITY  
AVENUE, WASHINGTON, DC 20001-1111  
TEL: 202.512.1111 FAX: 202.512.1111  
WWW.HZ-ARCHITECTS.COM

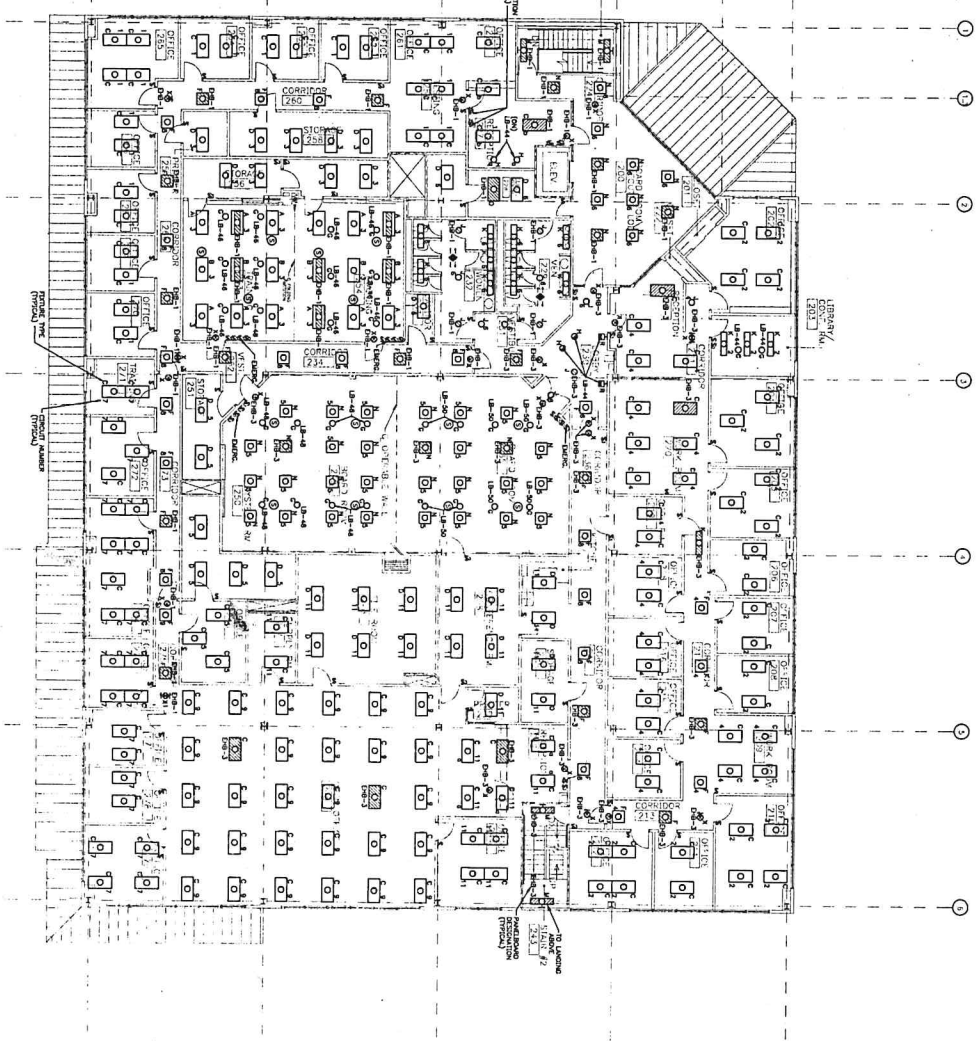
**OPERATIONS CENTER**  
TRANSFORMATION CENTER  
FOR THE NORTH TRANSPORTATION AUTHORITY  
4704 NORTH TRANSPORTATION AUTHORITY  
AVENUE, WASHINGTON, DC 20001-1111  
TEL: 202.512.1111 FAX: 202.512.1111  
WWW.HZ-ARCHITECTS.COM

2/3 E-4 5/5  
DESIGNED BY: [Signature]  
CHECKED BY: [Signature]  
DRAWN BY: [Signature]  
DATE: 2/27/25  
SHEET E-47  
OF 59E

**CHI ENGINEERING, INC.**  
2400 Columbia Avenue  
Suite 200  
Columbia, SC 29204  
Tel: 803.733.1111  
Fax: 803.733.1111  
www.chi-engineering.com

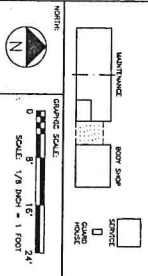
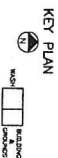
2/3 E-4 5/5  
DESIGNED BY: [Signature]  
CHECKED BY: [Signature]  
DRAWN BY: [Signature]  
DATE: 2/27/25  
SHEET E-47  
OF 59E

DATE	BY	DESCRIPTION
2/27/25	EDS	SCALE FROM EDS



1 SECOND FLOOR PLAN - LIGHTING  
SCALE: 1/8" = 1'-0"

- GENERAL NOTES**
1. ALL DIMENSIONS SHOWN ON THIS PLAN ARE IN INCHES UNLESS OTHERWISE NOTED.
  2. ALL DIMENSIONS SHALL BE TO FACE UNLESS OTHERWISE NOTED.
  3. ALL WORK SHALL BE IN ACCORDANCE WITH THE LATEST EDITIONS OF THE NATIONAL ELECTRICAL CODE (NEC) AND THE NATIONAL FIRE ALARMS CODE (NFPA 72).
  4. REFER TO SHEET E-45 FOR SYMBOLS AND ABREVIATIONS.



1. DATE FOR ISSUE	2/27/24
2. NO. REVISIONS/COMMENTS	
DATE	

**HUIT-ZOLLARS**  
ENGINEERS & ARCHITECTS

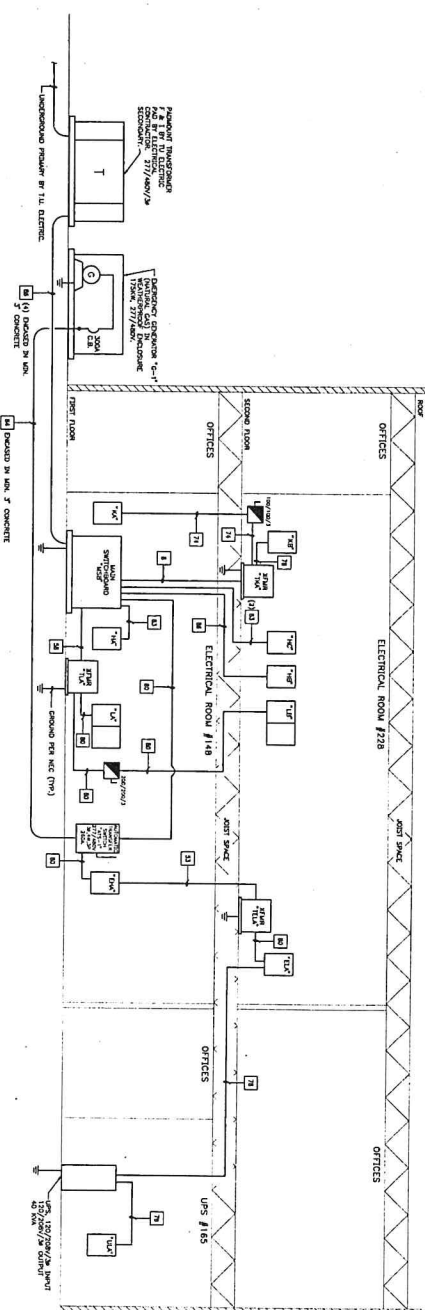
**LEED**  
LEED RENEWABLE CONSULTANTS, INC.  
CONSULTING ENGINEERS AND ARCHITECTS  
2500 WILSON BLVD., SUITE 200  
ANN ARBOR, MI 48106  
PH: 734.769.9900  
WWW.LEEDCONSULTANTS.COM

**4th**  
A NEW OPERATIONS CENTER AND  
TRANSFORMATION CENTER  
OPERATIONS CENTER  
SECOND FLOOR PLAN - LIGHTING  
PROJECT NUMBER: 03-073201  
SHEET E-45  
DATE: 2/27/24

**CBI** Cannon  
ENGINEERS, Inc.  
2342 Corporate Avenue  
Cincinnati, OH 45237  
PH: 513.533.2200  
FAX: 513.533.2200

317.022.21  
SECOND FLOOR PLAN - LIGHTING  
PROJECT NUMBER: 03-073201  
SHEET E-45  
DATE: 2/27/24  
OF 59E





1 ELECTRICAL RISER DIAGRAM OPERATIONS CENTER  
SCALE: NONE

FEEDER SCHEDULE			
NO.	WIRING	CONDUIT	AMP FEED
1	3/12	1/2"	60
2	3/12	1/2"	60
3	3/12	1/2"	60
4	3/12	1/2"	60
5	3/12	1/2"	60
6	3/12	1/2"	60
7	3/12	1/2"	60
8	3/12	1/2"	60
9	3/12	1/2"	60
10	3/12	1/2"	60
11	3/12	1/2"	60
12	3/12	1/2"	60
13	3/12	1/2"	60
14	3/12	1/2"	60
15	3/12	1/2"	60
16	3/12	1/2"	60
17	3/12	1/2"	60
18	3/12	1/2"	60
19	3/12	1/2"	60
20	3/12	1/2"	60
21	3/12	1/2"	60
22	3/12	1/2"	60
23	3/12	1/2"	60
24	3/12	1/2"	60
25	3/12	1/2"	60
26	3/12	1/2"	60
27	3/12	1/2"	60
28	3/12	1/2"	60
29	3/12	1/2"	60
30	3/12	1/2"	60
31	3/12	1/2"	60
32	3/12	1/2"	60
33	3/12	1/2"	60
34	3/12	1/2"	60
35	3/12	1/2"	60
36	3/12	1/2"	60
37	3/12	1/2"	60
38	3/12	1/2"	60
39	3/12	1/2"	60
40	3/12	1/2"	60
41	3/12	1/2"	60
42	3/12	1/2"	60
43	3/12	1/2"	60
44	3/12	1/2"	60
45	3/12	1/2"	60
46	3/12	1/2"	60
47	3/12	1/2"	60
48	3/12	1/2"	60
49	3/12	1/2"	60
50	3/12	1/2"	60
51	3/12	1/2"	60
52	3/12	1/2"	60
53	3/12	1/2"	60
54	3/12	1/2"	60
55	3/12	1/2"	60
56	3/12	1/2"	60
57	3/12	1/2"	60
58	3/12	1/2"	60
59	3/12	1/2"	60
60	3/12	1/2"	60
61	3/12	1/2"	60
62	3/12	1/2"	60
63	3/12	1/2"	60
64	3/12	1/2"	60
65	3/12	1/2"	60
66	3/12	1/2"	60
67	3/12	1/2"	60
68	3/12	1/2"	60
69	3/12	1/2"	60
70	3/12	1/2"	60
71	3/12	1/2"	60
72	3/12	1/2"	60
73	3/12	1/2"	60
74	3/12	1/2"	60
75	3/12	1/2"	60
76	3/12	1/2"	60
77	3/12	1/2"	60
78	3/12	1/2"	60
79	3/12	1/2"	60
80	3/12	1/2"	60
81	3/12	1/2"	60
82	3/12	1/2"	60
83	3/12	1/2"	60
84	3/12	1/2"	60
85	3/12	1/2"	60
86	3/12	1/2"	60
87	3/12	1/2"	60
88	3/12	1/2"	60
89	3/12	1/2"	60
90	3/12	1/2"	60
91	3/12	1/2"	60
92	3/12	1/2"	60
93	3/12	1/2"	60
94	3/12	1/2"	60
95	3/12	1/2"	60
96	3/12	1/2"	60
97	3/12	1/2"	60
98	3/12	1/2"	60
99	3/12	1/2"	60
100	3/12	1/2"	60

TRANSFORMER SCHEDULE			
NO.	WIRING	CONDUIT	AMP FEED
1	3/12	1/2"	60
2	3/12	1/2"	60
3	3/12	1/2"	60
4	3/12	1/2"	60
5	3/12	1/2"	60
6	3/12	1/2"	60
7	3/12	1/2"	60
8	3/12	1/2"	60
9	3/12	1/2"	60
10	3/12	1/2"	60
11	3/12	1/2"	60
12	3/12	1/2"	60
13	3/12	1/2"	60
14	3/12	1/2"	60
15	3/12	1/2"	60
16	3/12	1/2"	60
17	3/12	1/2"	60
18	3/12	1/2"	60
19	3/12	1/2"	60
20	3/12	1/2"	60
21	3/12	1/2"	60
22	3/12	1/2"	60
23	3/12	1/2"	60
24	3/12	1/2"	60
25	3/12	1/2"	60
26	3/12	1/2"	60
27	3/12	1/2"	60
28	3/12	1/2"	60
29	3/12	1/2"	60
30	3/12	1/2"	60
31	3/12	1/2"	60
32	3/12	1/2"	60
33	3/12	1/2"	60
34	3/12	1/2"	60
35	3/12	1/2"	60
36	3/12	1/2"	60
37	3/12	1/2"	60
38	3/12	1/2"	60
39	3/12	1/2"	60
40	3/12	1/2"	60
41	3/12	1/2"	60
42	3/12	1/2"	60
43	3/12	1/2"	60
44	3/12	1/2"	60
45	3/12	1/2"	60
46	3/12	1/2"	60
47	3/12	1/2"	60
48	3/12	1/2"	60
49	3/12	1/2"	60
50	3/12	1/2"	60
51	3/12	1/2"	60
52	3/12	1/2"	60
53	3/12	1/2"	60
54	3/12	1/2"	60
55	3/12	1/2"	60
56	3/12	1/2"	60
57	3/12	1/2"	60
58	3/12	1/2"	60
59	3/12	1/2"	60
60	3/12	1/2"	60
61	3/12	1/2"	60
62	3/12	1/2"	60
63	3/12	1/2"	60
64	3/12	1/2"	60
65	3/12	1/2"	60
66	3/12	1/2"	60
67	3/12	1/2"	60
68	3/12	1/2"	60
69	3/12	1/2"	60
70	3/12	1/2"	60
71	3/12	1/2"	60
72	3/12	1/2"	60
73	3/12	1/2"	60
74	3/12	1/2"	60
75	3/12	1/2"	60
76	3/12	1/2"	60
77	3/12	1/2"	60
78	3/12	1/2"	60
79	3/12	1/2"	60
80	3/12	1/2"	60
81	3/12	1/2"	60
82	3/12	1/2"	60
83	3/12	1/2"	60
84	3/12	1/2"	60
85	3/12	1/2"	60
86	3/12	1/2"	60
87	3/12	1/2"	60
88	3/12	1/2"	60
89	3/12	1/2"	60
90	3/12	1/2"	60
91	3/12	1/2"	60
92	3/12	1/2"	60
93	3/12	1/2"	60
94	3/12	1/2"	60
95	3/12	1/2"	60
96	3/12	1/2"	60
97	3/12	1/2"	60
98	3/12	1/2"	60
99	3/12	1/2"	60
100	3/12	1/2"	60

120/208/240 VOLT

**ELECTRICAL RISER NOTES**

- ALL CIRCUITS SHOWN ARE UNLESS OTHERWISE NOTED.
- REFER TO FLOOR PLANS FOR ROOM AND EQUIPMENT IDENTIFICATION.



**HUIT-ZOLLARS ENGINEERS / ARCHITECTS**  
 1000 W. WASHINGTON AVENUE  
 SUITE 200  
 CHICAGO, ILLINOIS 60601  
 TEL: 312.467.1100  
 FAX: 312.467.1101  
 WWW.HUITZOLLARS.COM

**THE HERSHMAN GROUP**  
 A NEW OPERATIONS CENTER AND  
 TRANSPORTATION CENTER  
 PORT WORTH TRANSPORTATION AIRPORT  
 1400 W. WASHINGTON AVENUE  
 SUITE 200  
 CHICAGO, ILLINOIS 60601  
 TEL: 312.467.1100  
 FAX: 312.467.1101  
 WWW.HERSHMANGROUP.COM

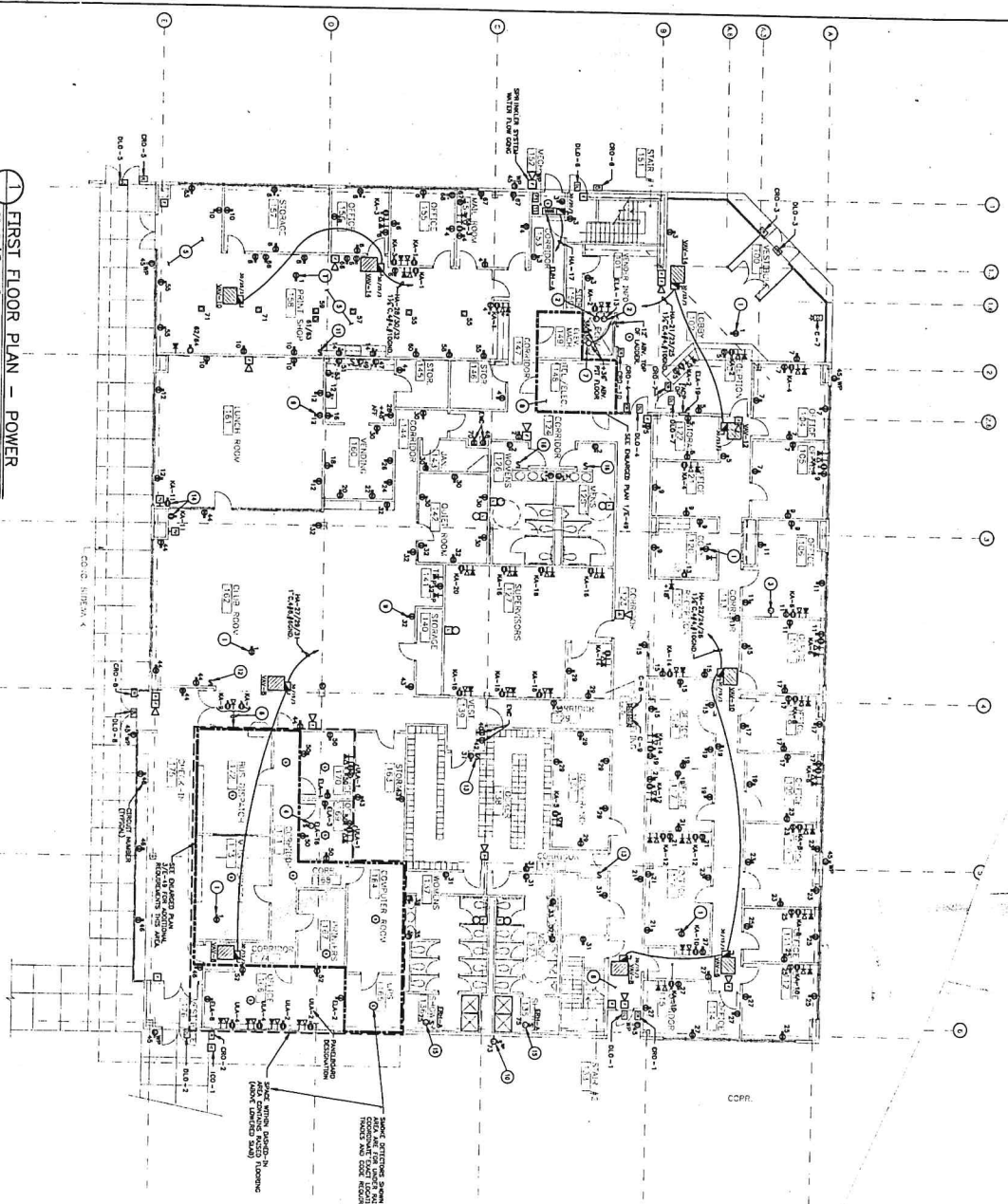
**CHI ENGINEERING, INC.**  
 1000 W. WASHINGTON AVENUE  
 SUITE 200  
 CHICAGO, ILLINOIS 60601  
 TEL: 312.467.1100  
 FAX: 312.467.1101  
 WWW.CHIEENGINEERING.COM

NO. 1000 W. WASHINGTON AVENUE  
 SUITE 200  
 CHICAGO, ILLINOIS 60601  
 DATE: 3/27/15

23 P. 45  
 RECORD NO. 03-0123.01  
 SHEET E-48  
 OF 59E

DATE	DESCRIPTION	BY
03/11/01	ISSUED FOR CONSTRUCTION	JL
03/07/01	ISSUED FOR PERMITS	JL
02/27/01	ISSUED FOR REVIEW	JL

**FIRST FLOOR PLAN - POWER**  
SCALE: 1/8" = 1'-0"

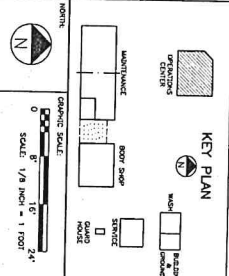


NOTE: ELECTRICAL SYMBOLS SHOWN WITHIN BRACKETED ARE NOT TO BE INSTALLED UNLESS SPECIFICALLY NOTED OTHERWISE. THESE SYMBOLS ARE FOR INFORMATION ONLY.

- GENERAL NOTES**
1. ALL ELECTRICAL SYMBOLS SHOWN WITHIN BRACKETED ARE NOT TO BE INSTALLED UNLESS SPECIFICALLY NOTED OTHERWISE. THESE SYMBOLS ARE FOR INFORMATION ONLY.
  2. REFER TO SHEET E-46 FOR SYMBOLS AND ABREVIATIONS.
  3. REFER TO E-47 FOR ELECTRICAL SYMBOLS DEFINITIONS.

**NOTES BY SYMBOL**  
(SEE E-47 FOR DETAILS)

1. PROVIDE ONE (1) POWER RECEPTACLE ABOVE CEILING SCHEMATIC TO EACH ROOM.
2. PROVIDE TWO (2) WALL MOUNTED, 4-RECEPT. STIPPLE PATTERN AND GROUP FLOOR PLAN SYMBOLS FOR EACH ROOM. PROVIDE ONE (1) RECEPTACLE CONNECTION RECEPTACLE.
3. PROVIDE ONE (1) RECEPTACLE ABOVE CEILING SCHEMATIC TO EACH RECEPTION AREA.
4. PROVIDE ONE (1) RECEPTACLE ABOVE CEILING SCHEMATIC TO EACH RECEPTION AREA.
5. PROVIDE ONE (1) RECEPTACLE ABOVE CEILING SCHEMATIC TO EACH RECEPTION AREA.
6. PROVIDE ONE (1) RECEPTACLE ABOVE CEILING SCHEMATIC TO EACH RECEPTION AREA.
7. PROVIDE ONE (1) RECEPTACLE ABOVE CEILING SCHEMATIC TO EACH RECEPTION AREA.
8. PROVIDE ONE (1) RECEPTACLE ABOVE CEILING SCHEMATIC TO EACH RECEPTION AREA.
9. PROVIDE ONE (1) RECEPTACLE ABOVE CEILING SCHEMATIC TO EACH RECEPTION AREA.
10. PROVIDE ONE (1) RECEPTACLE ABOVE CEILING SCHEMATIC TO EACH RECEPTION AREA.
11. PROVIDE ONE (1) RECEPTACLE ABOVE CEILING SCHEMATIC TO EACH RECEPTION AREA.
12. PROVIDE ONE (1) RECEPTACLE ABOVE CEILING SCHEMATIC TO EACH RECEPTION AREA.
13. PROVIDE ONE (1) RECEPTACLE ABOVE CEILING SCHEMATIC TO EACH RECEPTION AREA.
14. PROVIDE ONE (1) RECEPTACLE ABOVE CEILING SCHEMATIC TO EACH RECEPTION AREA.
15. PROVIDE ONE (1) RECEPTACLE ABOVE CEILING SCHEMATIC TO EACH RECEPTION AREA.
16. PROVIDE ONE (1) RECEPTACLE ABOVE CEILING SCHEMATIC TO EACH RECEPTION AREA.
17. PROVIDE ONE (1) RECEPTACLE ABOVE CEILING SCHEMATIC TO EACH RECEPTION AREA.
18. PROVIDE ONE (1) RECEPTACLE ABOVE CEILING SCHEMATIC TO EACH RECEPTION AREA.
19. PROVIDE ONE (1) RECEPTACLE ABOVE CEILING SCHEMATIC TO EACH RECEPTION AREA.
20. PROVIDE ONE (1) RECEPTACLE ABOVE CEILING SCHEMATIC TO EACH RECEPTION AREA.



**HUIT-ZOLLARS ENGINEERS/ARCHITECTS**  
1101 WEST 12TH AVENUE, SUITE 100  
DENVER, CO 80202  
TEL: 303.733.8800  
FAX: 303.733.8801  
WWW.HUITZOLLARS.COM

**MEISNER & PAVNE**  
1101 WEST 12TH AVENUE, SUITE 100  
DENVER, CO 80202  
TEL: 303.733.8800  
FAX: 303.733.8801  
WWW.MEISNERPAVNE.COM

**CONSTRUCTION COST MANAGEMENT CO.**  
1101 WEST 12TH AVENUE, SUITE 100  
DENVER, CO 80202  
TEL: 303.733.8800  
FAX: 303.733.8801  
WWW.CONSTRUCTIONCOSTMANAGEMENT.COM

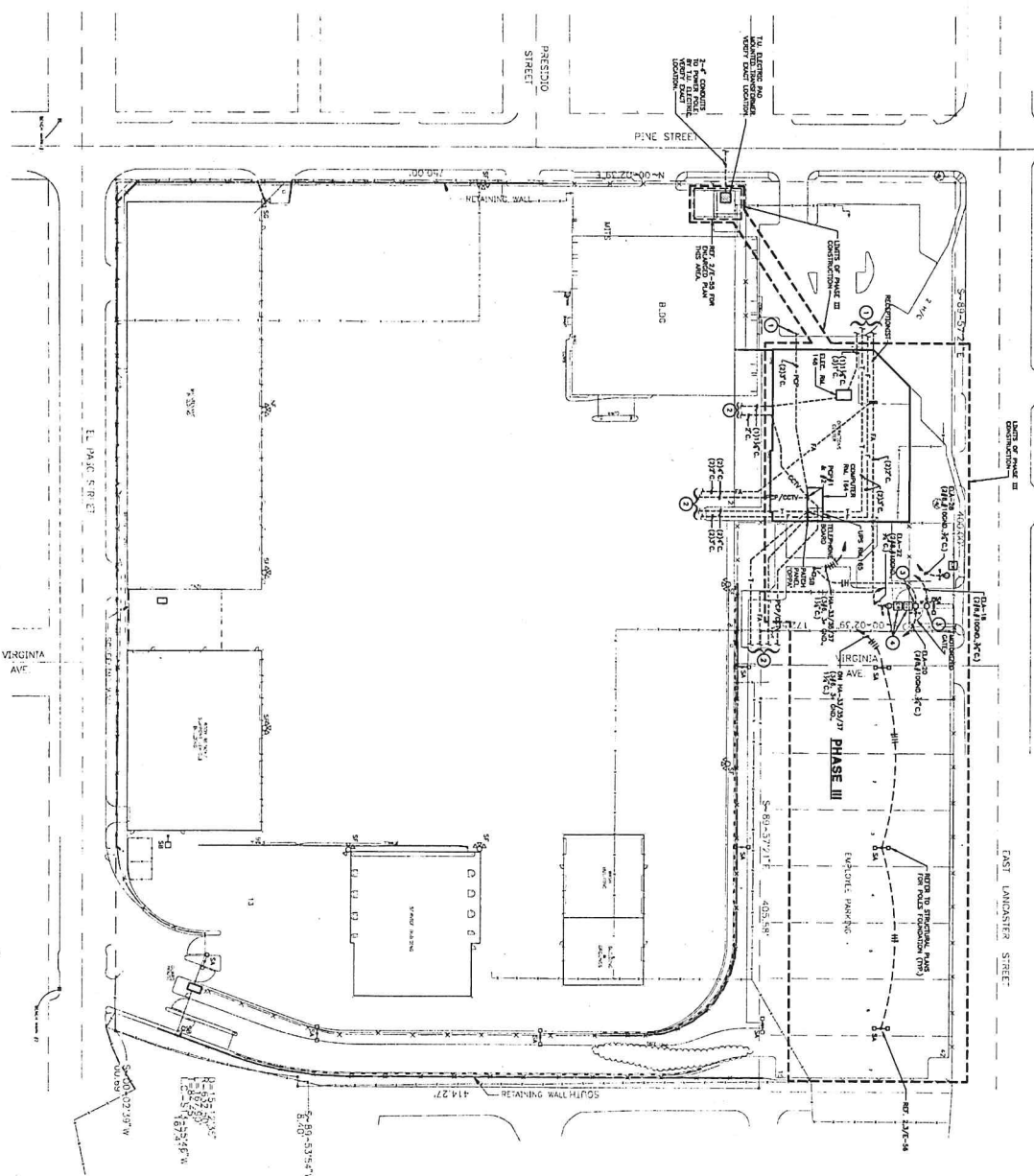
**OPERATIONS CENTER**  
FIRST FLOOR PLAN - POWER

PROJECT NUMBER: 03-011301  
SHEET E-46  
DATE: 2/27/01

**CBM CONSULTING INC.**  
1101 WEST 12TH AVENUE, SUITE 100  
DENVER, CO 80202  
TEL: 303.733.8800  
FAX: 303.733.8801  
WWW.CBMCONSULTING.COM

PROJECT NUMBER: 03-011301  
SHEET E-46  
DATE: 2/27/01

**1 PHASE III - SITE PLAN**  
 SHEET 140-2



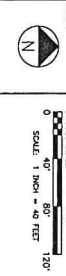
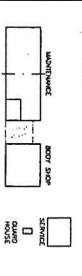
**GENERAL NOTES**

1. REFER TO SHEET 140-1 FOR SYMBOLS AND DIMENSIONS.
2. PROVIDE ALL NECESSARY UTILITY, WATER, AND SEWER MAINS.
3. FILL IN ALL EXISTING AND PROPOSED DRIVEWAYS AND DRIVEWAYS AND DRIVEWAYS.
4. PROVIDE ALL NECESSARY UTILITY, WATER, AND SEWER MAINS.
5. PROVIDE ALL NECESSARY UTILITY, WATER, AND SEWER MAINS.
6. PROVIDE ALL NECESSARY UTILITY, WATER, AND SEWER MAINS.
7. PROVIDE ALL NECESSARY UTILITY, WATER, AND SEWER MAINS.
8. PROVIDE ALL NECESSARY UTILITY, WATER, AND SEWER MAINS.

**NOTES BY SYMBOL - O-**

1. REFER TO SHEET 140-1 FOR SYMBOLS AND DIMENSIONS.
2. PROVIDE ALL NECESSARY UTILITY, WATER, AND SEWER MAINS.
3. FILL IN ALL EXISTING AND PROPOSED DRIVEWAYS AND DRIVEWAYS AND DRIVEWAYS.
4. PROVIDE ALL NECESSARY UTILITY, WATER, AND SEWER MAINS.
5. PROVIDE ALL NECESSARY UTILITY, WATER, AND SEWER MAINS.
6. PROVIDE ALL NECESSARY UTILITY, WATER, AND SEWER MAINS.
7. PROVIDE ALL NECESSARY UTILITY, WATER, AND SEWER MAINS.
8. PROVIDE ALL NECESSARY UTILITY, WATER, AND SEWER MAINS.

**KEY PLAN**

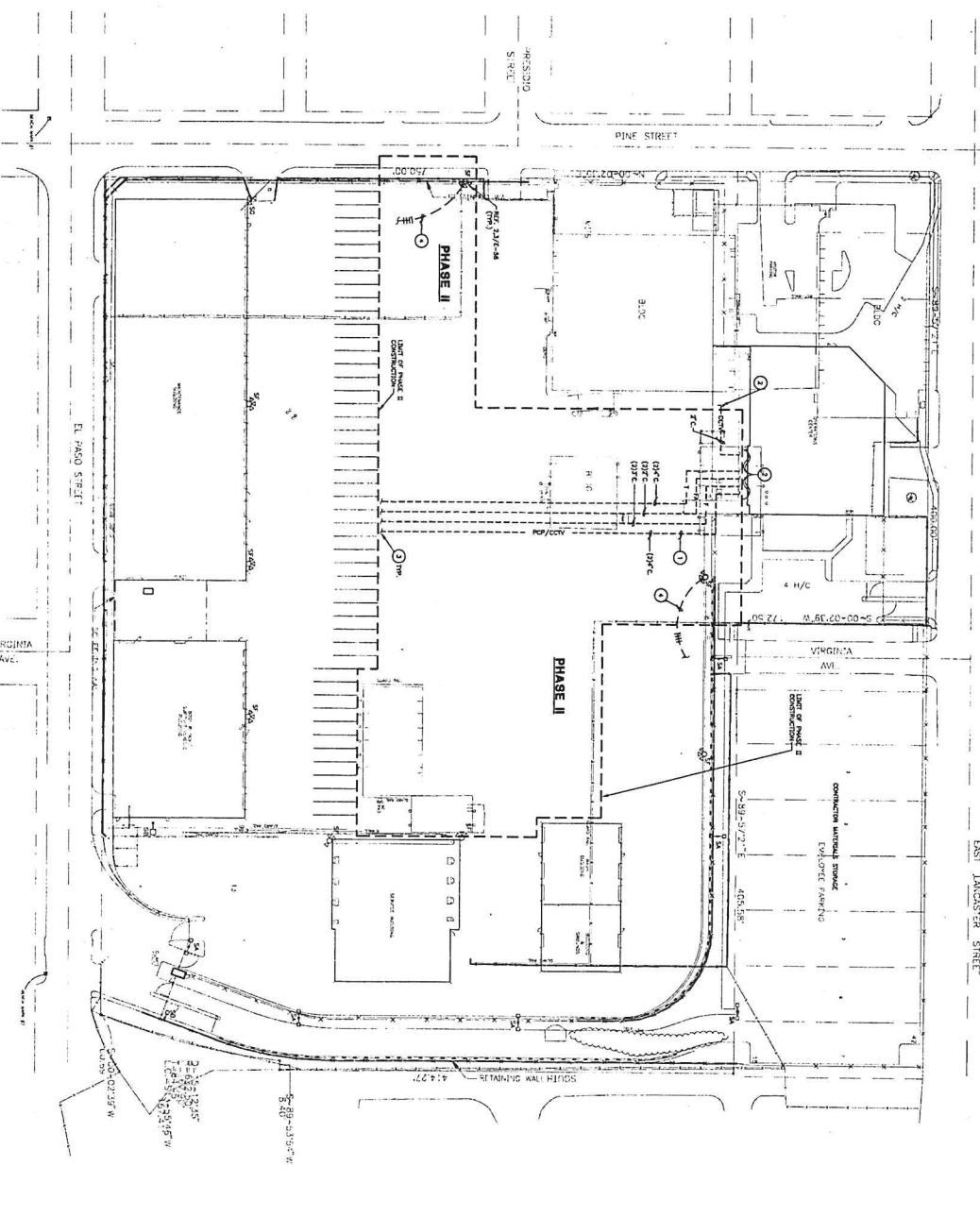


**HUIT - ZOLLARS**  
 ENGINEERS / ARCHITECTS  
 1000 W. 10TH STREET, SUITE 100  
 FORT WORTH, TEXAS 76102  
 TEL: 817-339-1111 FAX: 817-339-1111

**HERBELL R. PAYNE**  
 TRAFFIC ENGINEER  
 A NEW ORLEANS SOUTH AND  
 FORT WORTH TRANSPORTATION AUTHORITY  
 1000 W. 10TH STREET, SUITE 100  
 FORT WORTH, TEXAS 76102  
 TEL: 817-339-1111 FAX: 817-339-1111

**CHI GROUP**  
 CONSULTING ENGINEERS  
 1000 W. 10TH STREET, SUITE 100  
 FORT WORTH, TEXAS 76102  
 TEL: 817-339-1111 FAX: 817-339-1111

**1 PHASE II - SITE PLAN**  
 SHEET 740-57



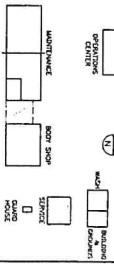
**GENERAL NOTES**

1. REFER TO SHEET 1 FOR FINISHES AND DIMENSIONS.
2. ALL CONSTRUCTION SHALL BE IN ACCORDANCE WITH THE LATEST EDITIONS OF THE INTERNATIONAL BUILDING CODES AND ALL APPLICABLE LOCAL ORDINANCES.
3. ALL CONSTRUCTION SHALL BE IN ACCORDANCE WITH THE LATEST EDITIONS OF THE NATIONAL ELECTRICAL CODE AND ALL APPLICABLE LOCAL ORDINANCES.
4. ALL CONSTRUCTION SHALL BE IN ACCORDANCE WITH THE LATEST EDITIONS OF THE NATIONAL MECHANICAL CODE AND ALL APPLICABLE LOCAL ORDINANCES.
5. ALL CONSTRUCTION SHALL BE IN ACCORDANCE WITH THE LATEST EDITIONS OF THE NATIONAL PLUMBING CODE AND ALL APPLICABLE LOCAL ORDINANCES.
6. ALL CONSTRUCTION SHALL BE IN ACCORDANCE WITH THE LATEST EDITIONS OF THE NATIONAL FIRE PROTECTION ASSOCIATION (NFPA) HAZARDOUS MATERIALS HANDBOOK AND ALL APPLICABLE LOCAL ORDINANCES.
7. ALL CONSTRUCTION SHALL BE IN ACCORDANCE WITH THE LATEST EDITIONS OF THE NATIONAL SAFETY COUNCIL'S LOSS PREVENTION HANDBOOK AND ALL APPLICABLE LOCAL ORDINANCES.
8. ALL CONSTRUCTION SHALL BE IN ACCORDANCE WITH THE LATEST EDITIONS OF THE NATIONAL ELECTRICAL SAFETY BOARD'S SAFETY PRACTICES HANDBOOK AND ALL APPLICABLE LOCAL ORDINANCES.

**NOTES BY SYMBOL**

1. EXISTING "TOP" GRADE IS INDICATED BY "T" TO ACCURACY.
2. EXISTING "FIN" GRADE IS INDICATED BY "F" TO ACCURACY.
3. CONSTRUCTION SHALL BE IN ACCORDANCE WITH THE LATEST EDITIONS OF THE NATIONAL ELECTRICAL CODE AND ALL APPLICABLE LOCAL ORDINANCES.
4. CONSTRUCTION SHALL BE IN ACCORDANCE WITH THE LATEST EDITIONS OF THE NATIONAL MECHANICAL CODE AND ALL APPLICABLE LOCAL ORDINANCES.
5. CONSTRUCTION SHALL BE IN ACCORDANCE WITH THE LATEST EDITIONS OF THE NATIONAL PLUMBING CODE AND ALL APPLICABLE LOCAL ORDINANCES.
6. CONSTRUCTION SHALL BE IN ACCORDANCE WITH THE LATEST EDITIONS OF THE NATIONAL FIRE PROTECTION ASSOCIATION (NFPA) HAZARDOUS MATERIALS HANDBOOK AND ALL APPLICABLE LOCAL ORDINANCES.
7. CONSTRUCTION SHALL BE IN ACCORDANCE WITH THE LATEST EDITIONS OF THE NATIONAL SAFETY COUNCIL'S LOSS PREVENTION HANDBOOK AND ALL APPLICABLE LOCAL ORDINANCES.
8. CONSTRUCTION SHALL BE IN ACCORDANCE WITH THE LATEST EDITIONS OF THE NATIONAL ELECTRICAL SAFETY BOARD'S SAFETY PRACTICES HANDBOOK AND ALL APPLICABLE LOCAL ORDINANCES.

**KEY PLAN**



NO.	DESCRIPTION/COMMENTS	DATE
1	ISSUED FOR BIDDING	2/27/93
2	REVISIONS	

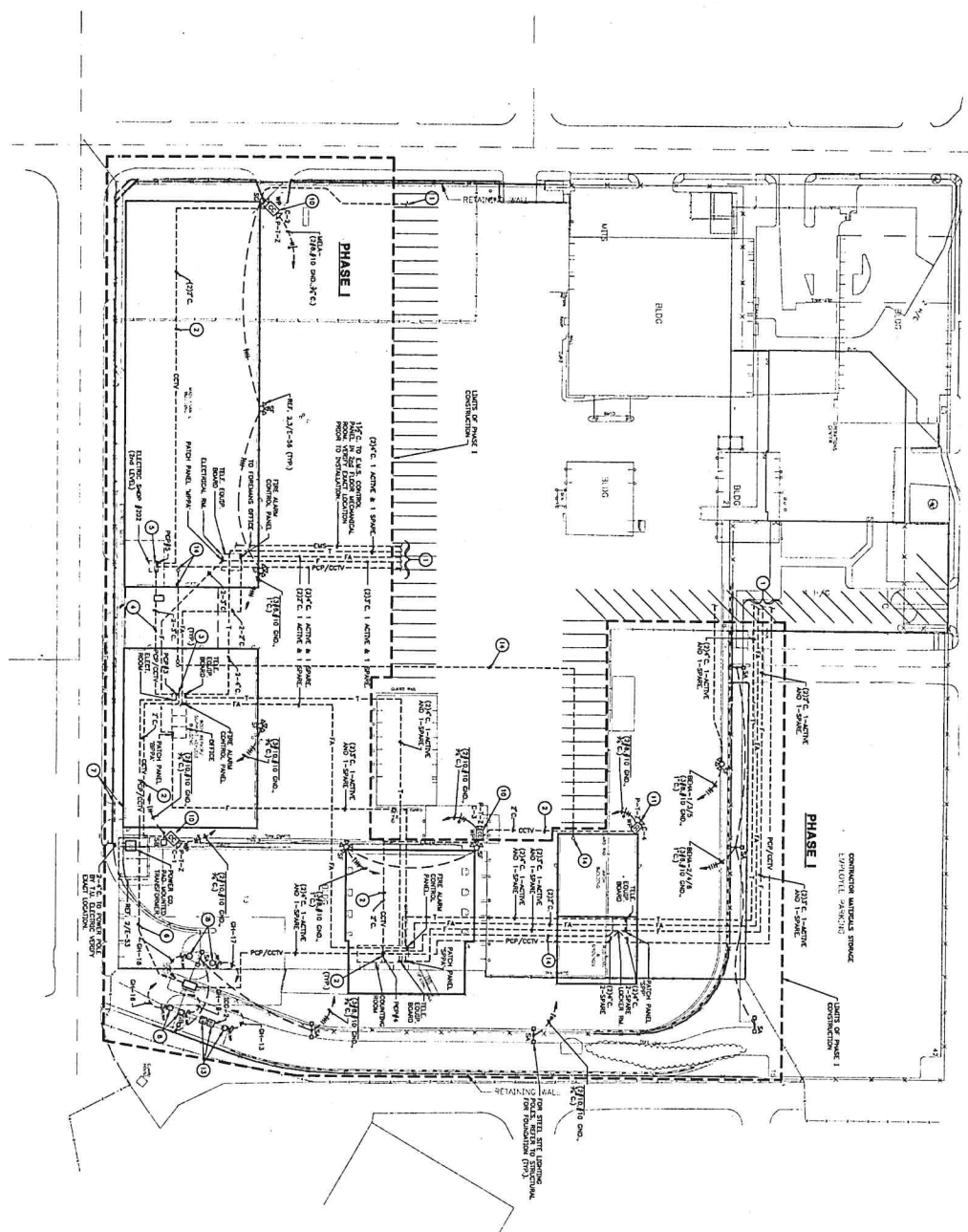
**HUIT-ZOLLARS**  
 ENGINEERS / ARCHITECTS  
 300 WEST 10TH AVENUE  
 DENVER, COLORADO 80202  
 PHONE: 303-733-1111  
 FAX: 303-733-1112

**HERSHEL & PAVNE**  
 TRANSPORTATION CONSULTANTS  
 A NEW CONSULTING CENTER HAS BEEN  
 MAINTAINED AT THE PORT MOUTH TRANSPORTATION AUTHORITY  
 7.5 WEST 10TH AVENUE, DENVER, COLORADO 80202  
 PHONE: 303-733-1111  
 FAX: 303-733-1112

**PHASE II - SITE PLAN**  
 SHEET 740-57

**OR 59E**

**1 ELECTRICAL SITE PLAN - PHASE 1**  
SCALE: 1"=40'-0"



**CEI ENGINEERS**  
2400 CHERRY STREET, SUITE 200  
DALLAS, TEXAS 75201  
PHONE: (214) 341-1234 FAX: (214) 341-1234  
WWW.CEI-ENGINEERS.COM

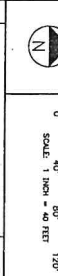
**RESER, R. FAYNE**  
TRAVELER  
A NEW OPERATIONS CENTER, AND  
MAINTENANCE AND SERVICE FACILITIES FOR  
PORT WORTH TRANSPORTATION AUTHORITY  
1000 W. WASHINGTON STREET, SUITE 1000  
PORT WORTH, TEXAS 76102  
PHONE: (817) 341-1234 FAX: (817) 341-1234  
WWW.RESER.COM

**HUTT-ZOLLARS**  
ENGINEERS / ARCHITECTS  
1000 W. WASHINGTON STREET, SUITE 1000  
PORT WORTH, TEXAS 76102  
PHONE: (817) 341-1234 FAX: (817) 341-1234  
WWW.HUTT-ZOLLARS.COM

**FILED INDEPENDENT CONSULTANTS, INC.**  
1000 W. WASHINGTON STREET, SUITE 1000  
PORT WORTH, TEXAS 76102  
PHONE: (817) 341-1234 FAX: (817) 341-1234  
WWW.FIC-INC.COM

**CONTRACT NO. 2009-0000000000000000**  
SHEET NO. 01 OF 02

**KEY PLAN**



NO.	DESCRIPTION / DIMENSIONS	DATE
1	ISSUE FOR BIDDING	11/27/10
2	REVISIONS	

**NOTES BY SYMBOL**

1. ALL ELECTRICAL SYMBOLS SHALL BE AS SHOWN ON THIS SHEET.
2. ALL ELECTRICAL SYMBOLS SHALL BE AS SHOWN ON THIS SHEET.
3. ALL ELECTRICAL SYMBOLS SHALL BE AS SHOWN ON THIS SHEET.
4. ALL ELECTRICAL SYMBOLS SHALL BE AS SHOWN ON THIS SHEET.
5. ALL ELECTRICAL SYMBOLS SHALL BE AS SHOWN ON THIS SHEET.
6. ALL ELECTRICAL SYMBOLS SHALL BE AS SHOWN ON THIS SHEET.
7. ALL ELECTRICAL SYMBOLS SHALL BE AS SHOWN ON THIS SHEET.
8. ALL ELECTRICAL SYMBOLS SHALL BE AS SHOWN ON THIS SHEET.
9. ALL ELECTRICAL SYMBOLS SHALL BE AS SHOWN ON THIS SHEET.
10. ALL ELECTRICAL SYMBOLS SHALL BE AS SHOWN ON THIS SHEET.
11. ALL ELECTRICAL SYMBOLS SHALL BE AS SHOWN ON THIS SHEET.
12. ALL ELECTRICAL SYMBOLS SHALL BE AS SHOWN ON THIS SHEET.
13. ALL ELECTRICAL SYMBOLS SHALL BE AS SHOWN ON THIS SHEET.
14. ALL ELECTRICAL SYMBOLS SHALL BE AS SHOWN ON THIS SHEET.
15. ALL ELECTRICAL SYMBOLS SHALL BE AS SHOWN ON THIS SHEET.
16. ALL ELECTRICAL SYMBOLS SHALL BE AS SHOWN ON THIS SHEET.
17. ALL ELECTRICAL SYMBOLS SHALL BE AS SHOWN ON THIS SHEET.
18. ALL ELECTRICAL SYMBOLS SHALL BE AS SHOWN ON THIS SHEET.
19. ALL ELECTRICAL SYMBOLS SHALL BE AS SHOWN ON THIS SHEET.
20. ALL ELECTRICAL SYMBOLS SHALL BE AS SHOWN ON THIS SHEET.

**GENERAL NOTES**

1. ALL ELECTRICAL SYMBOLS SHALL BE AS SHOWN ON THIS SHEET.
2. ALL ELECTRICAL SYMBOLS SHALL BE AS SHOWN ON THIS SHEET.
3. ALL ELECTRICAL SYMBOLS SHALL BE AS SHOWN ON THIS SHEET.
4. ALL ELECTRICAL SYMBOLS SHALL BE AS SHOWN ON THIS SHEET.
5. ALL ELECTRICAL SYMBOLS SHALL BE AS SHOWN ON THIS SHEET.
6. ALL ELECTRICAL SYMBOLS SHALL BE AS SHOWN ON THIS SHEET.
7. ALL ELECTRICAL SYMBOLS SHALL BE AS SHOWN ON THIS SHEET.
8. ALL ELECTRICAL SYMBOLS SHALL BE AS SHOWN ON THIS SHEET.
9. ALL ELECTRICAL SYMBOLS SHALL BE AS SHOWN ON THIS SHEET.
10. ALL ELECTRICAL SYMBOLS SHALL BE AS SHOWN ON THIS SHEET.
11. ALL ELECTRICAL SYMBOLS SHALL BE AS SHOWN ON THIS SHEET.
12. ALL ELECTRICAL SYMBOLS SHALL BE AS SHOWN ON THIS SHEET.
13. ALL ELECTRICAL SYMBOLS SHALL BE AS SHOWN ON THIS SHEET.
14. ALL ELECTRICAL SYMBOLS SHALL BE AS SHOWN ON THIS SHEET.
15. ALL ELECTRICAL SYMBOLS SHALL BE AS SHOWN ON THIS SHEET.
16. ALL ELECTRICAL SYMBOLS SHALL BE AS SHOWN ON THIS SHEET.
17. ALL ELECTRICAL SYMBOLS SHALL BE AS SHOWN ON THIS SHEET.
18. ALL ELECTRICAL SYMBOLS SHALL BE AS SHOWN ON THIS SHEET.
19. ALL ELECTRICAL SYMBOLS SHALL BE AS SHOWN ON THIS SHEET.
20. ALL ELECTRICAL SYMBOLS SHALL BE AS SHOWN ON THIS SHEET.

**ELECTRICAL SITE PLAN - PHASE 1**

DATE: 01/11/11

SHEET E-40

OF 59E

**AIR DEVICE SCHEDULE**

NO.	TYPE	DESCRIPTION	MANUFACTURER	MODEL	REMARKS
A	THIS	14" X 24" ROOF CURTAIN	226	200	17' 6"
B	THIS	14" X 24" ROOF CURTAIN	226	200	17' 6"
C	THIS	14" X 24" ROOF CURTAIN	226	200	17' 6"
D	THIS	14" X 24" ROOF CURTAIN	226	200	17' 6"
E	THIS	14" X 24" ROOF CURTAIN	226	200	17' 6"
F	THIS	14" X 24" ROOF CURTAIN	226	200	17' 6"
G	THIS	14" X 24" ROOF CURTAIN	226	200	17' 6"
H	THIS	14" X 24" ROOF CURTAIN	226	200	17' 6"

NOTE: 1. ALL DEVICES SHALL BE AS SHOWN UNLESS OTHERWISE NOTED.  
2. ALL DEVICES SHALL BE AS SHOWN UNLESS OTHERWISE NOTED.

**FAN POWERED VAV BOX SCHEDULE (ELECT)**

NO.	DESCRIPTION	MANUFACTURER	MODEL	REMARKS
1	VAV BOX	...	...	...
2	VAV BOX	...	...	...
3	VAV BOX	...	...	...
4	VAV BOX	...	...	...
5	VAV BOX	...	...	...
6	VAV BOX	...	...	...
7	VAV BOX	...	...	...
8	VAV BOX	...	...	...
9	VAV BOX	...	...	...
10	VAV BOX	...	...	...
11	VAV BOX	...	...	...
12	VAV BOX	...	...	...
13	VAV BOX	...	...	...
14	VAV BOX	...	...	...

**VAV BOX SCHEDULE**

NO.	DESCRIPTION	MANUFACTURER	MODEL	REMARKS
1	VAV BOX	...	...	...
2	VAV BOX	...	...	...
3	VAV BOX	...	...	...
4	VAV BOX	...	...	...
5	VAV BOX	...	...	...
6	VAV BOX	...	...	...
7	VAV BOX	...	...	...
8	VAV BOX	...	...	...
9	VAV BOX	...	...	...
10	VAV BOX	...	...	...
11	VAV BOX	...	...	...
12	VAV BOX	...	...	...
13	VAV BOX	...	...	...
14	VAV BOX	...	...	...

**ROOFTOP UNIT SCHEDULE (GAS)**

NO.	DESCRIPTION	MANUFACTURER	MODEL	REMARKS
1	ROOFTOP UNIT	...	...	...
2	ROOFTOP UNIT	...	...	...
3	ROOFTOP UNIT	...	...	...
4	ROOFTOP UNIT	...	...	...
5	ROOFTOP UNIT	...	...	...
6	ROOFTOP UNIT	...	...	...
7	ROOFTOP UNIT	...	...	...
8	ROOFTOP UNIT	...	...	...
9	ROOFTOP UNIT	...	...	...
10	ROOFTOP UNIT	...	...	...
11	ROOFTOP UNIT	...	...	...
12	ROOFTOP UNIT	...	...	...
13	ROOFTOP UNIT	...	...	...
14	ROOFTOP UNIT	...	...	...

NOTE: 1. ALL DEVICES SHALL BE AS SHOWN UNLESS OTHERWISE NOTED.  
2. ALL DEVICES SHALL BE AS SHOWN UNLESS OTHERWISE NOTED.

**FAN SCHEDULE**

NO.	DESCRIPTION	MANUFACTURER	MODEL	REMARKS
1	FAN	...	...	...
2	FAN	...	...	...
3	FAN	...	...	...
4	FAN	...	...	...
5	FAN	...	...	...
6	FAN	...	...	...
7	FAN	...	...	...
8	FAN	...	...	...
9	FAN	...	...	...
10	FAN	...	...	...
11	FAN	...	...	...
12	FAN	...	...	...
13	FAN	...	...	...
14	FAN	...	...	...

NOTE: 1. ALL DEVICES SHALL BE AS SHOWN UNLESS OTHERWISE NOTED.  
2. ALL DEVICES SHALL BE AS SHOWN UNLESS OTHERWISE NOTED.

**RADIANT TUBE HEATER SCHEDULE (GAS)**

NO.	DESCRIPTION	MANUFACTURER	MODEL	REMARKS
1	RADIANT TUBE HEATER	...	...	...
2	RADIANT TUBE HEATER	...	...	...
3	RADIANT TUBE HEATER	...	...	...
4	RADIANT TUBE HEATER	...	...	...
5	RADIANT TUBE HEATER	...	...	...
6	RADIANT TUBE HEATER	...	...	...
7	RADIANT TUBE HEATER	...	...	...
8	RADIANT TUBE HEATER	...	...	...
9	RADIANT TUBE HEATER	...	...	...
10	RADIANT TUBE HEATER	...	...	...
11	RADIANT TUBE HEATER	...	...	...
12	RADIANT TUBE HEATER	...	...	...
13	RADIANT TUBE HEATER	...	...	...
14	RADIANT TUBE HEATER	...	...	...

**UNIT HEATER SCHEDULE (ELECT)**

NO.	DESCRIPTION	MANUFACTURER	MODEL	REMARKS
1	UNIT HEATER	...	...	...
2	UNIT HEATER	...	...	...
3	UNIT HEATER	...	...	...
4	UNIT HEATER	...	...	...
5	UNIT HEATER	...	...	...
6	UNIT HEATER	...	...	...
7	UNIT HEATER	...	...	...
8	UNIT HEATER	...	...	...
9	UNIT HEATER	...	...	...
10	UNIT HEATER	...	...	...
11	UNIT HEATER	...	...	...
12	UNIT HEATER	...	...	...
13	UNIT HEATER	...	...	...
14	UNIT HEATER	...	...	...

**RADIANT PANEL HEATER SCHEDULE**

NO.	DESCRIPTION	MANUFACTURER	MODEL	REMARKS
1	RADIANT PANEL HEATER	...	...	...
2	RADIANT PANEL HEATER	...	...	...
3	RADIANT PANEL HEATER	...	...	...
4	RADIANT PANEL HEATER	...	...	...
5	RADIANT PANEL HEATER	...	...	...
6	RADIANT PANEL HEATER	...	...	...
7	RADIANT PANEL HEATER	...	...	...
8	RADIANT PANEL HEATER	...	...	...
9	RADIANT PANEL HEATER	...	...	...
10	RADIANT PANEL HEATER	...	...	...
11	RADIANT PANEL HEATER	...	...	...
12	RADIANT PANEL HEATER	...	...	...
13	RADIANT PANEL HEATER	...	...	...
14	RADIANT PANEL HEATER	...	...	...

NOTE: 1. ALL DEVICES SHALL BE AS SHOWN UNLESS OTHERWISE NOTED.  
2. ALL DEVICES SHALL BE AS SHOWN UNLESS OTHERWISE NOTED.

**GENERAL NOTE**

1. CONSULT ELECTRICAL SCHEDULES FOR DIMENSIONS.



**HUNT-ZOLLARS ENGINEERS / ARCHITECTS**

1121 BROADWAY, SUITE 1000  
NEW YORK, NY 10018  
TEL: (212) 691-1000  
FAX: (212) 691-1001  
WWW.HUNT-ZOLLARS.COM



THE AIR OPERATIONS CENTER  
TRANSFORMATION CENTER  
1000 PENNSYLVANIA AVENUE, N.W.  
WASHINGTON, D.C. 20546

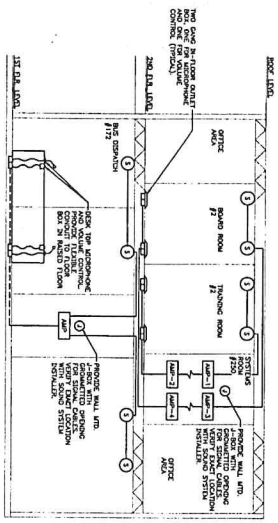
NO.	REVISION/DESCRIPTION	DATE
1 <td>ISSUE FOR BIDD</td> <td>3/27/05</td>	ISSUE FOR BIDD	3/27/05
2 <td>REVISION/DESCRIPTION</td> <td>DATE</td>	REVISION/DESCRIPTION	DATE

**CEI** CONSULTING ENGINEERS, INC.  
7145 Columbia Avenue  
Suite 200  
New York, NY 10019  
Tel: (212) 261-1000  
Fax: (212) 261-1001



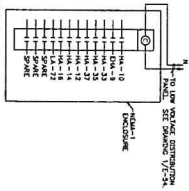
DESIGNED BY: SK  
CHECKED BY: SK  
DRAWN BY: SA  
DATE: 2/17/05



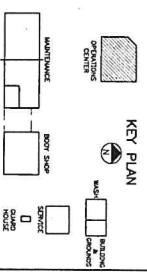


**1 PA - SYSTEM RISER DIAGRAM**  
SCALE NONE

- NOTES:  
1. SEE ELECTRICAL LIGHTING PLAN FOR EQUIPMENT QUANTITY OF SYMBOLS.  
2. SEE SPECIFICATIONS FOR MORE.



**2 LIGHTING CONTACTOR WIRING DIAGRAM**  
SCALE NONE



NO.	REVISION/DESCRIPTION	DATE
1 <td>ISSUE FOR BIDS</td> <td>3/27/75</td>	ISSUE FOR BIDS	3/27/75

**HUIIT-ZOLLARS**  
ENGINEERS / ARCHITECTS  
1000 W. 10th Street, Suite 100  
Fort Worth, Texas 76102  
TELEPHONE: 734-1111  
FAX: 734-1112

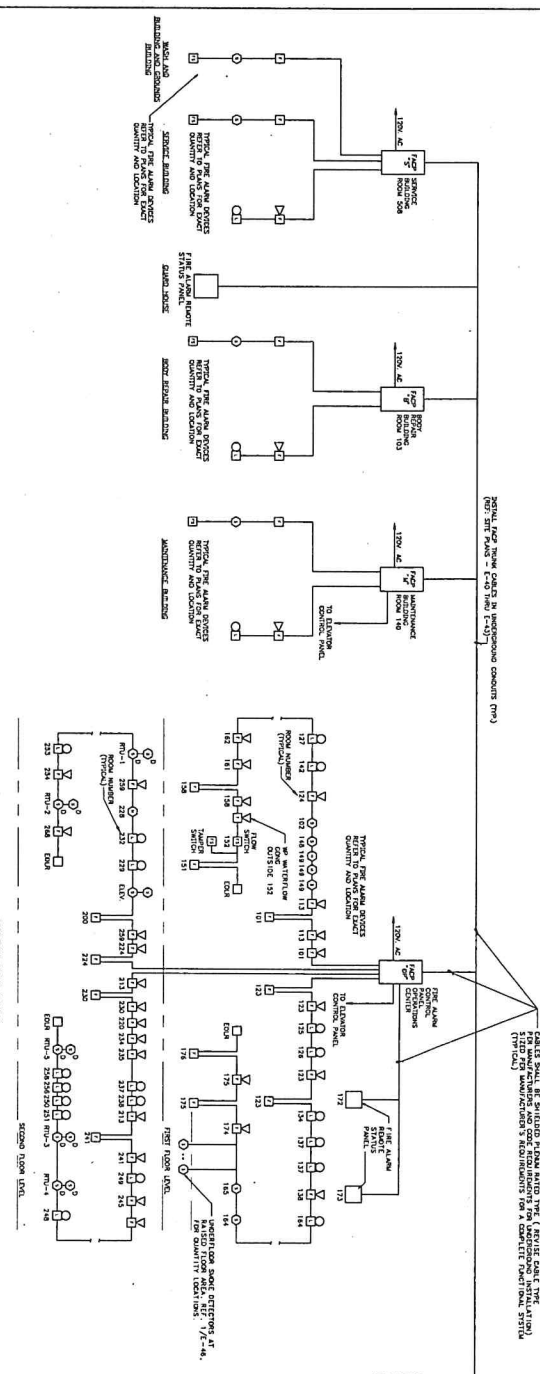
**URS CORPORATION**  
CONSULTANTS  
1000 W. 10th Street, Suite 100  
Fort Worth, Texas 76102  
TELEPHONE: 734-1111  
FAX: 734-1112

**THE STAR**  
A NEW OPERATING CENTER AND  
FORT WORTH TRANSPORTATION AUTHORITY  
1000 W. 10th Street, Suite 100  
Fort Worth, Texas 76102  
TELEPHONE: 734-1111  
FAX: 734-1112

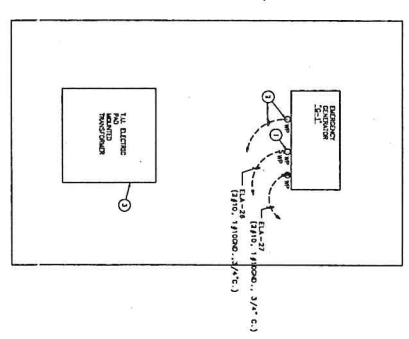
**DIAGRAMS AND DETAILS**  
DESIGNED: KJZ/AD  
DRAWN: MJS  
DATE: 2/4/75  
SHEET E-50  
OF 59E

**CEI CONSULTING ENGINEERS, INC.**  
2400 Cambridge Avenue  
Fort Worth, Texas 76102  
TELEPHONE: 734-1111  
FAX: 734-1112





1 SITE FIRE ALARM RISER DIAGRAM  
SCALE NONE



3 INTERCOM RISER DIAGRAM  
SCALE NONE

2 ENLARGED GENERATOR AND PAD MOUNTED TRANSFORMER PLAN - OPERATIONS CENTER  
SCALE 1/4" = 1'-0"

**GENERAL NOTES**  
(1/23/2007)

1. SEE THE FIRE ALARM RISER DIAGRAM FOR THE LOCATION OF ALL FIRE ALARM DEVICES.
2. THE LOCATION OF ALL FIRE ALARM DEVICES SHOULD BE VERIFIED BY THE CONTRACTOR PRIOR TO INSTALLATION.
3. THE LOCATION OF ALL FIRE ALARM DEVICES SHOULD BE VERIFIED BY THE CONTRACTOR PRIOR TO INSTALLATION.
4. THE LOCATION OF ALL FIRE ALARM DEVICES SHOULD BE VERIFIED BY THE CONTRACTOR PRIOR TO INSTALLATION.
5. THE LOCATION OF ALL FIRE ALARM DEVICES SHOULD BE VERIFIED BY THE CONTRACTOR PRIOR TO INSTALLATION.
6. THE LOCATION OF ALL FIRE ALARM DEVICES SHOULD BE VERIFIED BY THE CONTRACTOR PRIOR TO INSTALLATION.
7. THE LOCATION OF ALL FIRE ALARM DEVICES SHOULD BE VERIFIED BY THE CONTRACTOR PRIOR TO INSTALLATION.
8. THE LOCATION OF ALL FIRE ALARM DEVICES SHOULD BE VERIFIED BY THE CONTRACTOR PRIOR TO INSTALLATION.
9. THE LOCATION OF ALL FIRE ALARM DEVICES SHOULD BE VERIFIED BY THE CONTRACTOR PRIOR TO INSTALLATION.
10. THE LOCATION OF ALL FIRE ALARM DEVICES SHOULD BE VERIFIED BY THE CONTRACTOR PRIOR TO INSTALLATION.

**NOTES BY SYMBOL**  
(1/23/2007)

1. - See for fire alarm symbol.
2. - See for fire alarm symbol.
3. - See for fire alarm symbol.
4. - See for fire alarm symbol.
5. - See for fire alarm symbol.
6. - See for fire alarm symbol.
7. - See for fire alarm symbol.
8. - See for fire alarm symbol.
9. - See for fire alarm symbol.
10. - See for fire alarm symbol.

**KEY PLAN**

**HUITZ-ZOLLARS ENGINEERS / ARCHITECTS**  
2100 North 1st Street  
Fort Worth, Texas 76102  
Phone: 817.339.8800  
Fax: 817.339.8801  
www.huitz-zollars.com

**HEBBEL & PAVNE TRANSPORTATION CONSULTANTS**  
1000 North 1st Street  
Fort Worth, Texas 76102  
Phone: 817.339.8800  
Fax: 817.339.8801  
www.hebbel-pavne.com

**CONTRACT INFORMATION**  
CONTRACT NUMBER: 03-0713101  
CONTRACT DATE: 03/20/07

**SITE RISER DIAGRAMS AND DETAILS**  
DESIGNER: JQ  
CHECKER: JQ  
DATE: 03/20/07

**PROJECT INFORMATION**  
PROJECT: 03-0713101  
SHEET: E-55  
OF 59E

### DISTRIBUTION PANEL SESB

QTY	DESCRIPTION	110	125	150	200	250	300	350	400	450	500	550	600	650	700	750	800	850	900	950	1000
1	Panel, 100 Amp																				
2	Panel, 200 Amp																				
3	Panel, 300 Amp																				
4	Panel, 400 Amp																				
5	Panel, 500 Amp																				
6	Panel, 600 Amp																				
7	Panel, 700 Amp																				
8	Panel, 800 Amp																				
9	Panel, 900 Amp																				
10	Panel, 1000 Amp																				
11	Panel, 1100 Amp																				
12	Panel, 1200 Amp																				
13	Panel, 1300 Amp																				
14	Panel, 1400 Amp																				
15	Panel, 1500 Amp																				

ALL CIRCUIT BREAKERS TO BE SUPPLIED BY THE MANUFACTURER LISTED BELOW.

24-1-1984

### SWITCHBOARD STMSB

QTY	DESCRIPTION	110	125	150	200	250	300	350	400	450	500	550	600	650	700	750	800	850	900	950	1000
1	Switchboard, 100 Amp																				
2	Switchboard, 200 Amp																				
3	Switchboard, 300 Amp																				
4	Switchboard, 400 Amp																				
5	Switchboard, 500 Amp																				
6	Switchboard, 600 Amp																				
7	Switchboard, 700 Amp																				
8	Switchboard, 800 Amp																				
9	Switchboard, 900 Amp																				
10	Switchboard, 1000 Amp																				
11	Switchboard, 1100 Amp																				
12	Switchboard, 1200 Amp																				
13	Switchboard, 1300 Amp																				
14	Switchboard, 1400 Amp																				
15	Switchboard, 1500 Amp																				

ALL CIRCUIT BREAKERS TO BE SUPPLIED BY THE MANUFACTURER LISTED BELOW.

24-1-1984

**CEI** ENGINEERING, INC.  
 7400 Campbell Avenue  
 Suite 200  
 San Diego, CA 92121  
 (619) 594-4200  
 FAX: (619) 594-4201

**CEI** ENGINEERING, INC.  
 25 S. LA JOLLA  
 SAN DIEGO, CA 92161  
 (619) 594-4200  
 FAX: (619) 594-4201

**KEY PLAN**

OPERATION CENTER  
 MAINTENANCE  
 BOY SHOP  
 STORAGE  
 OFFICE  
 WAREHOUSE

GRAPHIC SCALE:  
 0 10' 20'  
 SCALE: 1/8" = 1'-0"

**HUIT-ZOLLARS**  
 ENGINEERS / ARCHITECTS  
 1000 G STREET, N.W.  
 WASHINGTON, D.C. 20004  
 (202) 638-1100

**ELECTRICAL PANEL SCHEDULES**

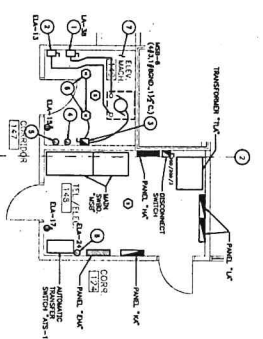
DESIGNED BY: [ ]  
 CHECKED BY: [ ]  
 DRAWN BY: [ ]  
 DATE: [ ]

**SITE**

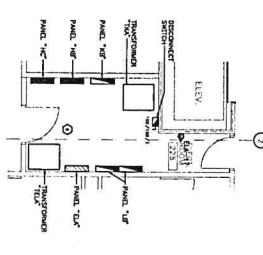
1 NEW OPERATING CENTER AND  
 1 NEW MAINTENANCE CENTER  
 FORT WORTH TRANSPORTATION AUTHORITY  
 7400 CAMPBELL AVENUE, SUITE 200  
 SAN DIEGO, CALIFORNIA 92121

**PROJECT NUMBER:** 03-01731/1  
**SHEET:** E-57  
**DATE:** 2/17/79

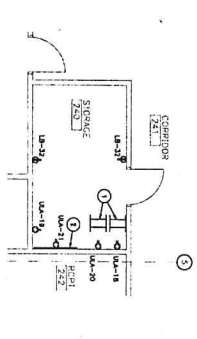
**OR 59E**



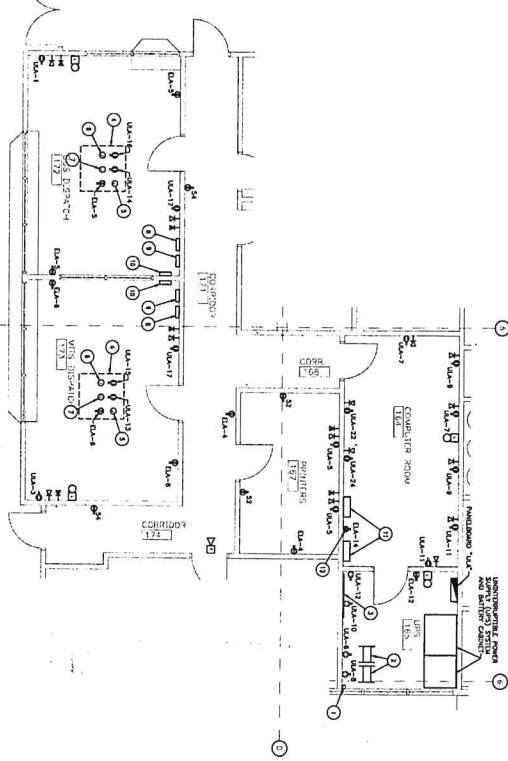
1 ENLARGED RMS. 148 & 149  
SCALE 1/8" = 1'-0" (REF. NOTES BY SYMBOL FOR 1/2"-0")



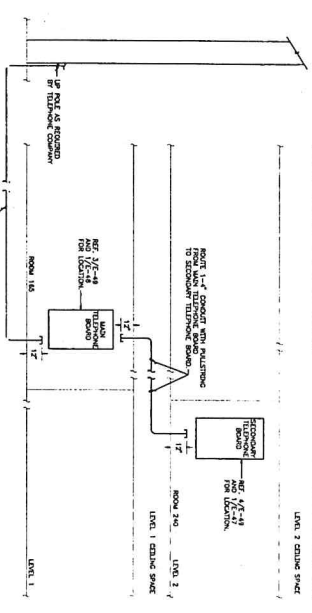
2 ENLARGED ELEC. RM. 228  
SCALE 1/8" = 1'-0"



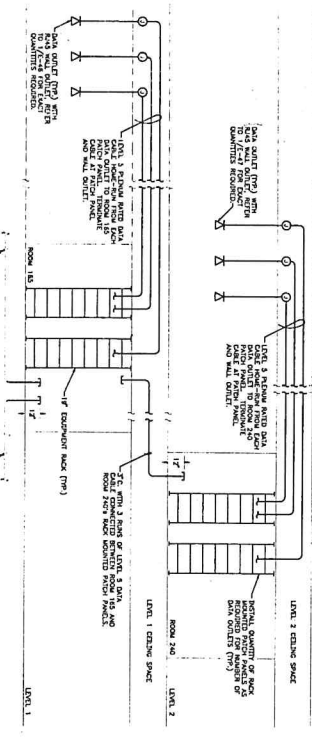
4 ENLARGED STORAGE RM. 240  
SCALE 1/8" = 1'-0" (REF. NOTES BY SYMBOL FOR 1/2"-0")



3 ENLARGED DISPATCH AREA PLAN  
SCALE 1/8" = 1'-0" (REF. NOTES BY SYMBOL FOR 1/2"-0")



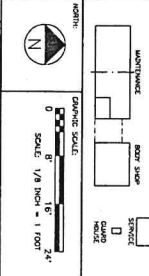
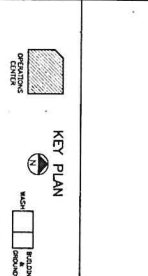
5 OPERATIONS CENTER TELEPHONE RISER DIAGRAM  
SCALE NONE



6 OPERATIONS CENTER COMPUTER RISER DIAGRAM  
SCALE NONE

NOTES BY SYMBOL

- INSTALL 4-200A COIL CHAINS AT 2'-0" FROM ROOM 148 UP TO POWER ROOM. PROVIDE 100% OVERCURRENT PROTECTION FOR ALL CIRCUITS.
- INSTALL 4-200A COIL CHAINS AT 2'-0" FROM ROOM 149 UP TO POWER ROOM. PROVIDE 100% OVERCURRENT PROTECTION FOR ALL CIRCUITS.
- INSTALL 4-200A COIL CHAINS AT 2'-0" FROM ROOM 228 UP TO POWER ROOM. PROVIDE 100% OVERCURRENT PROTECTION FOR ALL CIRCUITS.
- INSTALL 4-200A COIL CHAINS AT 2'-0" FROM ROOM 240 UP TO POWER ROOM. PROVIDE 100% OVERCURRENT PROTECTION FOR ALL CIRCUITS.
- INSTALL 4-200A COIL CHAINS AT 2'-0" FROM DISPATCH AREA UP TO POWER ROOM. PROVIDE 100% OVERCURRENT PROTECTION FOR ALL CIRCUITS.
- INSTALL 4-200A COIL CHAINS AT 2'-0" FROM TELEPHONE RISER UP TO POWER ROOM. PROVIDE 100% OVERCURRENT PROTECTION FOR ALL CIRCUITS.
- INSTALL 4-200A COIL CHAINS AT 2'-0" FROM COMPUTER RISER UP TO POWER ROOM. PROVIDE 100% OVERCURRENT PROTECTION FOR ALL CIRCUITS.
- INSTALL 4-200A COIL CHAINS AT 2'-0" FROM TELEPHONE RISER UP TO POWER ROOM. PROVIDE 100% OVERCURRENT PROTECTION FOR ALL CIRCUITS.
- INSTALL 4-200A COIL CHAINS AT 2'-0" FROM COMPUTER RISER UP TO POWER ROOM. PROVIDE 100% OVERCURRENT PROTECTION FOR ALL CIRCUITS.
- INSTALL 4-200A COIL CHAINS AT 2'-0" FROM TELEPHONE RISER UP TO POWER ROOM. PROVIDE 100% OVERCURRENT PROTECTION FOR ALL CIRCUITS.
- INSTALL 4-200A COIL CHAINS AT 2'-0" FROM COMPUTER RISER UP TO POWER ROOM. PROVIDE 100% OVERCURRENT PROTECTION FOR ALL CIRCUITS.

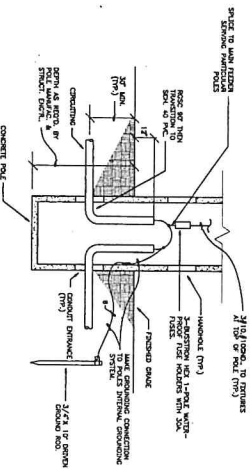


HUITZ-ZOLLARS  
ENGINEERS / ARCHITECTS  
235-A-11-95  
235-A-11-95  
235-A-11-95

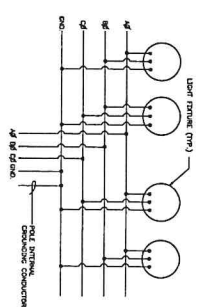
OPERATIONS CENTER  
TRANSPORTATION CENTER  
1800 WESTERN TRANSPORTATION AUTHORITY  
DIAGRAMS & DETAILS

235-A-11-95  
REVISIONS  
DATE: 2/17/73

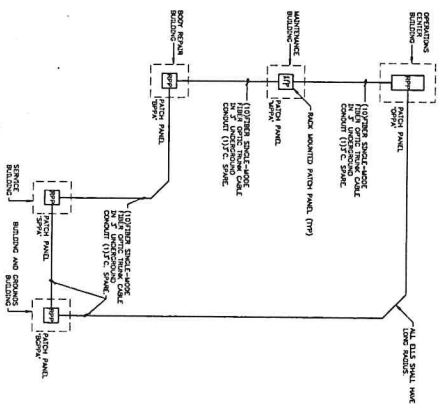
DATE	BY	CHECKED BY	SCALE
2/17/73	MS	MS	1/8" = 1'-0"



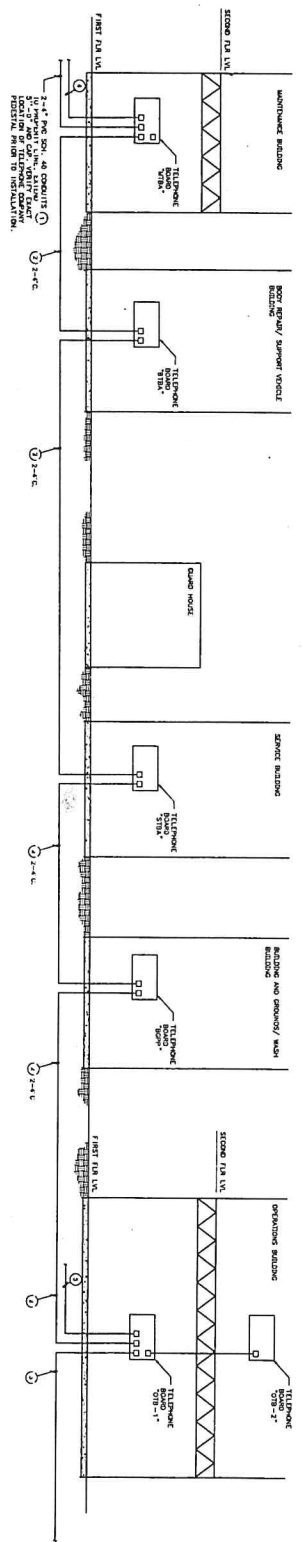
**3 DIRECT EMBEDDED CONCRETE POLE WIRING DETAIL (TYP.)**  
SCALE NONE  
NOTE - SEEING TYPICAL FOR STEEL POLES WITH TO STRUCTURAL PLANS FOR STEEL POLE POLE AND SUBSEQUENTLY



**4 POLE LIGHTS WIRING DIAGRAM (TYP.)**  
SCALE NONE

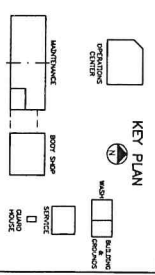


**1 FIBEROPTIC RISER DIAGRAM**  
SCALE NONE



**2 SITE - TELEPHONE RISER DIAGRAM**  
SCALE NONE

- DETAILS AT SYMBOL**
- 1 FIBEROPTIC 2\"/>



NO.	REVISION/DATE	DATE
1	ISSUE FOR BIDS	3/27/79
2	REVISION/DATE	

**HUIT-ZOLLARS**  
ENGINEERS / ARCHITECTS  
1000 WEST 10TH AVENUE, SUITE 100  
DENVER, COLORADO 80202

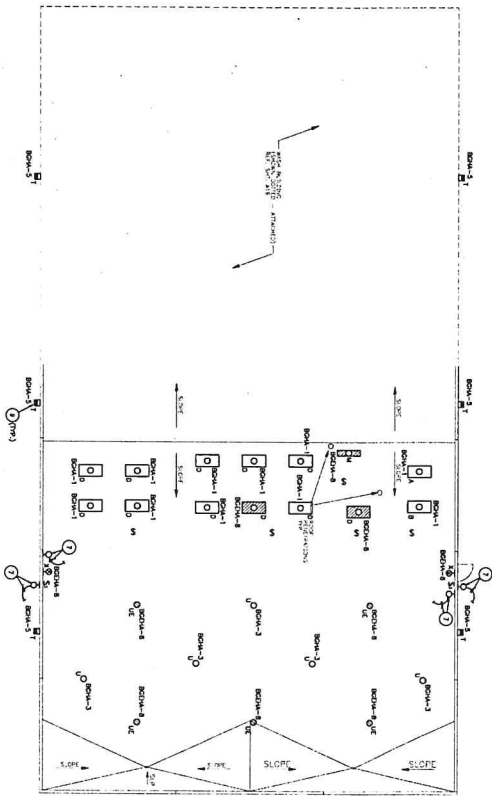
**HNTB**  
TRANSPORTATION CONSULTANTS  
A NEW OPERATING CENTER AND  
WORKSPACE FOR THE DENVER AIRPORT  
1000 WEST 10TH AVENUE, SUITE 100  
DENVER, COLORADO 80202

**CBT** CONSULTING ENGINEERS, INC.  
7340 Grandview Avenue  
Denver, Colorado 80231  
(313) 281-4288 (FAX)  
(313) 281-4288

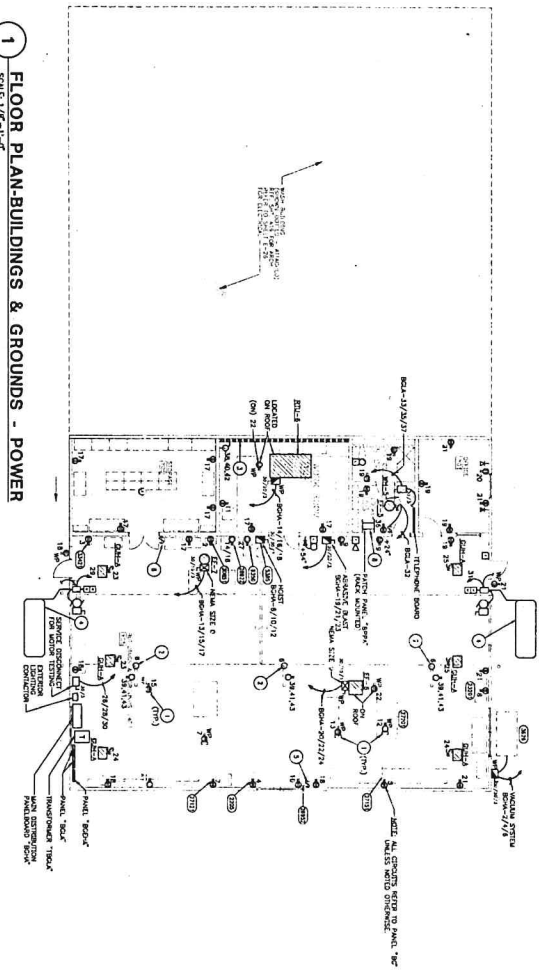
**SITE RISER DIAGRAM AND DETAILS**  
DESIGNED BY: JH  
CHECKED BY: JH  
DATE: 06/78  
PROJECT NUMBER: 03-013301  
SHEET: E-56  
OF 59E

DATE	BY	APP'D
06/78	JH	JH



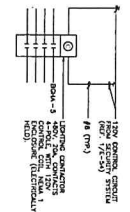


**2 FLOOR PLAN-BUILDINGS & GROUNDS - LIGHTING**  
SCALE: 1/8" = 1'-0"



**1 FLOOR PLAN-BUILDINGS & GROUNDS - POWER**  
SCALE: 1/8" = 1'-0"

**3 EXTERIOR LIGHTING CONTROL DIAGRAM**  
SCALE: NONE

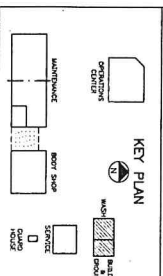


**GENERAL NOTES**

1. PER 1/2" = 1'-0" ALL SYMBOLS CORRECT TO PANEL, W/OUT ANALYSIS BEING REQUIRED.
2. THESE EXTERIOR LIGHTS ARE LOCATED AT THE 4' x 4' x 4' SECTION OF THE EXTERIOR WALL. THE LIGHTS ARE TO BE CONTROLLED BY THE PHOTO EYE SENSOR AND SHALL BE 1" x 4" x 4" 3" WATT 3" WATT PARABOLIC REFLECTOR LIGHTS. THE LIGHTS ARE TO BE CONTROLLED BY THE PHOTO EYE SENSOR AND SHALL BE 1" x 4" x 4" 3" WATT 3" WATT PARABOLIC REFLECTOR LIGHTS. THE LIGHTS ARE TO BE CONTROLLED BY THE PHOTO EYE SENSOR AND SHALL BE 1" x 4" x 4" 3" WATT 3" WATT PARABOLIC REFLECTOR LIGHTS.
3. THE PHOTO EYE SENSOR IS TO BE CONTROLLED BY THE PHOTO EYE SENSOR AND SHALL BE 1" x 4" x 4" 3" WATT 3" WATT PARABOLIC REFLECTOR LIGHTS.
4. THE PHOTO EYE SENSOR IS TO BE CONTROLLED BY THE PHOTO EYE SENSOR AND SHALL BE 1" x 4" x 4" 3" WATT 3" WATT PARABOLIC REFLECTOR LIGHTS.
5. THE PHOTO EYE SENSOR IS TO BE CONTROLLED BY THE PHOTO EYE SENSOR AND SHALL BE 1" x 4" x 4" 3" WATT 3" WATT PARABOLIC REFLECTOR LIGHTS.
6. THE PHOTO EYE SENSOR IS TO BE CONTROLLED BY THE PHOTO EYE SENSOR AND SHALL BE 1" x 4" x 4" 3" WATT 3" WATT PARABOLIC REFLECTOR LIGHTS.
7. THE PHOTO EYE SENSOR IS TO BE CONTROLLED BY THE PHOTO EYE SENSOR AND SHALL BE 1" x 4" x 4" 3" WATT 3" WATT PARABOLIC REFLECTOR LIGHTS.

**NOTES BY SYMBOL**

1. THESE EXTERIOR LIGHTS ARE LOCATED AT THE 4' x 4' x 4' SECTION OF THE EXTERIOR WALL. THE LIGHTS ARE TO BE CONTROLLED BY THE PHOTO EYE SENSOR AND SHALL BE 1" x 4" x 4" 3" WATT 3" WATT PARABOLIC REFLECTOR LIGHTS.
2. THE PHOTO EYE SENSOR IS TO BE CONTROLLED BY THE PHOTO EYE SENSOR AND SHALL BE 1" x 4" x 4" 3" WATT 3" WATT PARABOLIC REFLECTOR LIGHTS.
3. THE PHOTO EYE SENSOR IS TO BE CONTROLLED BY THE PHOTO EYE SENSOR AND SHALL BE 1" x 4" x 4" 3" WATT 3" WATT PARABOLIC REFLECTOR LIGHTS.
4. THE PHOTO EYE SENSOR IS TO BE CONTROLLED BY THE PHOTO EYE SENSOR AND SHALL BE 1" x 4" x 4" 3" WATT 3" WATT PARABOLIC REFLECTOR LIGHTS.
5. THE PHOTO EYE SENSOR IS TO BE CONTROLLED BY THE PHOTO EYE SENSOR AND SHALL BE 1" x 4" x 4" 3" WATT 3" WATT PARABOLIC REFLECTOR LIGHTS.
6. THE PHOTO EYE SENSOR IS TO BE CONTROLLED BY THE PHOTO EYE SENSOR AND SHALL BE 1" x 4" x 4" 3" WATT 3" WATT PARABOLIC REFLECTOR LIGHTS.
7. THE PHOTO EYE SENSOR IS TO BE CONTROLLED BY THE PHOTO EYE SENSOR AND SHALL BE 1" x 4" x 4" 3" WATT 3" WATT PARABOLIC REFLECTOR LIGHTS.



NO.	REVISION/DATE	BY	DATE
1	SCALE FOR BIDS		3/27/93
2	NO. REVISIONS/DATE		DATE

**HUIT-ZOLLARS**  
ENGINEERS / ARCHITECTS  
675 S. 10th St. / Suite 200 / Milwaukee, WI 53233  
TEL: 414-333-1111 / FAX: 414-333-1112

**CHI ENGINEERS, Inc.**  
7450 Greenfield Avenue  
Chicago, IL 60631  
TEL: 773-440-1231  
FAX: 773-440-1232

**THE STAR**  
TRANSPORTATION CENTER  
BUILDING AND GROUNDS  
LIGHTING AND POWER

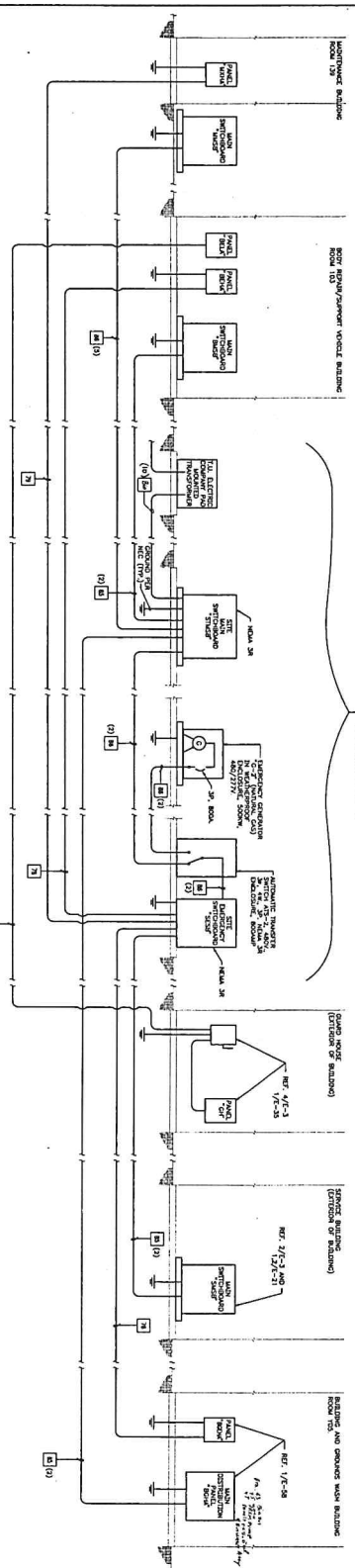
73' x 4.4' x 75'

DESIGNER: CHI ENGINEERS, INC.  
DATE: 3/27/93

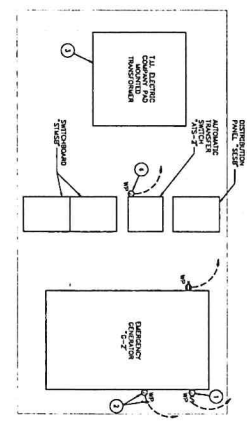
PROJECT NUMBER: 03-0173201  
SHEET: E-58  
OF 59E

DATE	BY	REVISION
3/27/93	MS	SCALE FOR BIDS
3/27/93	MS	NO. REVISIONS/DATE

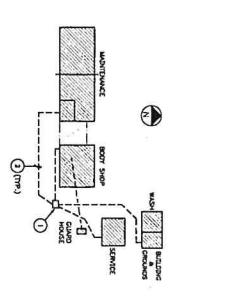




1 SITE ELECTRICAL RISER DIAGRAM  
SCALE NONE



2 ENLARGED EMERGENCY GENERATOR "G-2" & PAD MOUNTED TRANSFORMER & SWITCHGEAR PLAN  
SCALE 1/4" = 1'-0"



3 FEEDER ROUTING PLAN  
SCALE NONE (SEE NOTES BY SYMBOL 3/2-53 ONLY)

**FEEDER SCHEDULE**

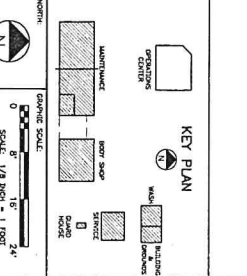
NO.	3 CONDUCTOR	CONDUIT	WIRE SIZE	4 CONDUCTOR	WIRE SIZE
1	3/4"	1/2"	3/8"	1/2"	3/8"
2	3/4"	1/2"	3/8"	1/2"	3/8"
3	3/4"	1/2"	3/8"	1/2"	3/8"
4	3/4"	1/2"	3/8"	1/2"	3/8"
5	3/4"	1/2"	3/8"	1/2"	3/8"
6	3/4"	1/2"	3/8"	1/2"	3/8"
7	3/4"	1/2"	3/8"	1/2"	3/8"
8	3/4"	1/2"	3/8"	1/2"	3/8"
9	3/4"	1/2"	3/8"	1/2"	3/8"
10	3/4"	1/2"	3/8"	1/2"	3/8"
11	3/4"	1/2"	3/8"	1/2"	3/8"
12	3/4"	1/2"	3/8"	1/2"	3/8"
13	3/4"	1/2"	3/8"	1/2"	3/8"
14	3/4"	1/2"	3/8"	1/2"	3/8"
15	3/4"	1/2"	3/8"	1/2"	3/8"
16	3/4"	1/2"	3/8"	1/2"	3/8"
17	3/4"	1/2"	3/8"	1/2"	3/8"
18	3/4"	1/2"	3/8"	1/2"	3/8"
19	3/4"	1/2"	3/8"	1/2"	3/8"
20	3/4"	1/2"	3/8"	1/2"	3/8"
21	3/4"	1/2"	3/8"	1/2"	3/8"
22	3/4"	1/2"	3/8"	1/2"	3/8"
23	3/4"	1/2"	3/8"	1/2"	3/8"
24	3/4"	1/2"	3/8"	1/2"	3/8"
25	3/4"	1/2"	3/8"	1/2"	3/8"
26	3/4"	1/2"	3/8"	1/2"	3/8"
27	3/4"	1/2"	3/8"	1/2"	3/8"
28	3/4"	1/2"	3/8"	1/2"	3/8"
29	3/4"	1/2"	3/8"	1/2"	3/8"
30	3/4"	1/2"	3/8"	1/2"	3/8"
31	3/4"	1/2"	3/8"	1/2"	3/8"
32	3/4"	1/2"	3/8"	1/2"	3/8"
33	3/4"	1/2"	3/8"	1/2"	3/8"
34	3/4"	1/2"	3/8"	1/2"	3/8"
35	3/4"	1/2"	3/8"	1/2"	3/8"
36	3/4"	1/2"	3/8"	1/2"	3/8"
37	3/4"	1/2"	3/8"	1/2"	3/8"
38	3/4"	1/2"	3/8"	1/2"	3/8"
39	3/4"	1/2"	3/8"	1/2"	3/8"
40	3/4"	1/2"	3/8"	1/2"	3/8"
41	3/4"	1/2"	3/8"	1/2"	3/8"
42	3/4"	1/2"	3/8"	1/2"	3/8"
43	3/4"	1/2"	3/8"	1/2"	3/8"
44	3/4"	1/2"	3/8"	1/2"	3/8"
45	3/4"	1/2"	3/8"	1/2"	3/8"
46	3/4"	1/2"	3/8"	1/2"	3/8"
47	3/4"	1/2"	3/8"	1/2"	3/8"
48	3/4"	1/2"	3/8"	1/2"	3/8"
49	3/4"	1/2"	3/8"	1/2"	3/8"
50	3/4"	1/2"	3/8"	1/2"	3/8"
51	3/4"	1/2"	3/8"	1/2"	3/8"
52	3/4"	1/2"	3/8"	1/2"	3/8"
53	3/4"	1/2"	3/8"	1/2"	3/8"
54	3/4"	1/2"	3/8"	1/2"	3/8"
55	3/4"	1/2"	3/8"	1/2"	3/8"
56	3/4"	1/2"	3/8"	1/2"	3/8"
57	3/4"	1/2"	3/8"	1/2"	3/8"
58	3/4"	1/2"	3/8"	1/2"	3/8"
59	3/4"	1/2"	3/8"	1/2"	3/8"
60	3/4"	1/2"	3/8"	1/2"	3/8"
61	3/4"	1/2"	3/8"	1/2"	3/8"
62	3/4"	1/2"	3/8"	1/2"	3/8"
63	3/4"	1/2"	3/8"	1/2"	3/8"
64	3/4"	1/2"	3/8"	1/2"	3/8"
65	3/4"	1/2"	3/8"	1/2"	3/8"
66	3/4"	1/2"	3/8"	1/2"	3/8"
67	3/4"	1/2"	3/8"	1/2"	3/8"
68	3/4"	1/2"	3/8"	1/2"	3/8"
69	3/4"	1/2"	3/8"	1/2"	3/8"
70	3/4"	1/2"	3/8"	1/2"	3/8"
71	3/4"	1/2"	3/8"	1/2"	3/8"
72	3/4"	1/2"	3/8"	1/2"	3/8"
73	3/4"	1/2"	3/8"	1/2"	3/8"
74	3/4"	1/2"	3/8"	1/2"	3/8"
75	3/4"	1/2"	3/8"	1/2"	3/8"
76	3/4"	1/2"	3/8"	1/2"	3/8"
77	3/4"	1/2"	3/8"	1/2"	3/8"
78	3/4"	1/2"	3/8"	1/2"	3/8"
79	3/4"	1/2"	3/8"	1/2"	3/8"
80	3/4"	1/2"	3/8"	1/2"	3/8"
81	3/4"	1/2"	3/8"	1/2"	3/8"
82	3/4"	1/2"	3/8"	1/2"	3/8"
83	3/4"	1/2"	3/8"	1/2"	3/8"
84	3/4"	1/2"	3/8"	1/2"	3/8"
85	3/4"	1/2"	3/8"	1/2"	3/8"
86	3/4"	1/2"	3/8"	1/2"	3/8"
87	3/4"	1/2"	3/8"	1/2"	3/8"
88	3/4"	1/2"	3/8"	1/2"	3/8"
89	3/4"	1/2"	3/8"	1/2"	3/8"
90	3/4"	1/2"	3/8"	1/2"	3/8"
91	3/4"	1/2"	3/8"	1/2"	3/8"
92	3/4"	1/2"	3/8"	1/2"	3/8"
93	3/4"	1/2"	3/8"	1/2"	3/8"
94	3/4"	1/2"	3/8"	1/2"	3/8"
95	3/4"	1/2"	3/8"	1/2"	3/8"
96	3/4"	1/2"	3/8"	1/2"	3/8"
97	3/4"	1/2"	3/8"	1/2"	3/8"
98	3/4"	1/2"	3/8"	1/2"	3/8"
99	3/4"	1/2"	3/8"	1/2"	3/8"
100	3/4"	1/2"	3/8"	1/2"	3/8"

**GENERAL ELECTRICAL NOTES**  
(SEE SHEET 591)

1. REFER TO LAYOUT PLANS AND SEE "WALL" FOR LOCATIONS OF DEVICES.
2. REFER TO LAYOUT PLANS AND SEE "WALL" FOR LOCATIONS OF DEVICES.
3. REFER TO LAYOUT PLANS AND SEE "WALL" FOR LOCATIONS OF DEVICES.
4. REFER TO LAYOUT PLANS AND SEE "WALL" FOR LOCATIONS OF DEVICES.
5. REFER TO LAYOUT PLANS AND SEE "WALL" FOR LOCATIONS OF DEVICES.
6. REFER TO LAYOUT PLANS AND SEE "WALL" FOR LOCATIONS OF DEVICES.
7. REFER TO LAYOUT PLANS AND SEE "WALL" FOR LOCATIONS OF DEVICES.
8. REFER TO LAYOUT PLANS AND SEE "WALL" FOR LOCATIONS OF DEVICES.
9. REFER TO LAYOUT PLANS AND SEE "WALL" FOR LOCATIONS OF DEVICES.
10. REFER TO LAYOUT PLANS AND SEE "WALL" FOR LOCATIONS OF DEVICES.

**NOTES BY SYMBOL**  
(SEE 53 ONLY)

1. REFER TO LAYOUT PLANS AND SEE "WALL" FOR LOCATIONS OF DEVICES.
2. REFER TO LAYOUT PLANS AND SEE "WALL" FOR LOCATIONS OF DEVICES.
3. REFER TO LAYOUT PLANS AND SEE "WALL" FOR LOCATIONS OF DEVICES.
4. REFER TO LAYOUT PLANS AND SEE "WALL" FOR LOCATIONS OF DEVICES.
5. REFER TO LAYOUT PLANS AND SEE "WALL" FOR LOCATIONS OF DEVICES.
6. REFER TO LAYOUT PLANS AND SEE "WALL" FOR LOCATIONS OF DEVICES.
7. REFER TO LAYOUT PLANS AND SEE "WALL" FOR LOCATIONS OF DEVICES.
8. REFER TO LAYOUT PLANS AND SEE "WALL" FOR LOCATIONS OF DEVICES.
9. REFER TO LAYOUT PLANS AND SEE "WALL" FOR LOCATIONS OF DEVICES.
10. REFER TO LAYOUT PLANS AND SEE "WALL" FOR LOCATIONS OF DEVICES.



**KEY PLAN**  
SCALE 1/8" = 1'-0"

**HUIT-ZOLLARS**  
ENGINEERS / ARCHITECTS  
14111 WINDSOR CONSTRUCTION, INC.  
CONSTRUCTION COST MANAGEMENT CO.  
METROPLEX, COMMERCE, TEXAS

**SITE ELECTRICAL RISER DIAGRAM**  
PROJECT NUMBER: 03-0173101  
SHEET E-53  
DATE: 2/27/75

**CHI ENGINEERS, INC.**  
2100 GARDNER STREET  
DALLAS, TEXAS 75201  
PHONE: 512-351-1234  
FAX: 512-351-1234

**CHI ENGINEERS, INC.**  
2100 GARDNER STREET  
DALLAS, TEXAS 75201  
PHONE: 512-351-1234  
FAX: 512-351-1234



